

367 Camp Mountain Road, Camp Mountain, Qld 4520



Sold House

Monday, 14 August 2023

367 Camp Mountain Road, Camp Mountain, Qld 4520

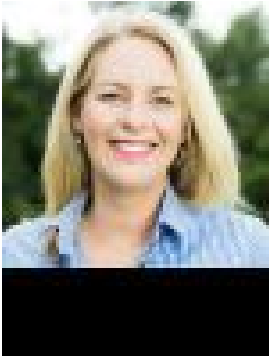
Bedrooms: 4

Bathrooms: 2

Parkings: 4

Area: 9619 m2

Type: House



Ronni Grevell



Kirsty Hopkins
0414337733

\$955,000

Character Camp Mountain Residence on 2.3 Acres Positioned close to the city with gorgeous views, this 2.3-acre block offers elevated country living with an entry level price that leaves space for so many opportunities. Enjoy the never-to-be-built-out private views into natural bush land and stunning mountain vistas. Perfectly capturing the style, substance and generous proportions of homes built in the 1950s, the 4-bed, 2 bath weatherboard residence offers solid bones, warm timber floorboards, large country kitchen with walk-in pantry with space for casual eat-in dining. Offering open plan living and dining with cosy wood burning fireplace, period leadlight windows and a huge built-in under-house area with parking for four vehicles and space to have both a workshop and large gym, the home has room for the whole family. The solid bones of the home form an ideal base to live in 'as is' or are perfect for renovation; or while you build your new home on the newly established building pad. The current owners have invested significant funds into securing building approval for a proposed 6-bed modern masterpiece, designed to capture the spectacular views. They are happy to include these plans with the sale should the new owners wish. Build new, or enjoy the retro styling, character features and generous room sizes of the existing residence and get on with living your life in the country! Your family will love exploring the property, including a huge treehouse with slide and rock-climbing adventure wall, plus your own dam for cool summer swims. You're also a short distance from popular hiking and bike trails and an easy drive to the Ferny Grove rail and Ferny Grove Central shopping and cinema development (currently under construction). Just a few minutes from the heart of Samford Village, with its wealth of good schools, shopping, dining, and sporting amenities you can raise your family with country values in a place where warm smiles and friendly waves are the norm – yet you're still a very easy drive into Brisbane CBD. Entry level acreage properties are rare as hens' teeth in the Samford region, making this property a clever choice for buyers looking to break into the premium country lifestyle that makes Camp Mountain homes such enviable assets. The finer details:

- Structurally sound 1950s era weatherboard home
- 2.3 acres (9619 sqm) of cleared and natural bushland
- 4 large bedrooms, all with gorgeous, elevated views
- Open plan living and large country kitchen
- Air con (living and bedroom) plus fans throughout
- Slow combustion fireplace for cosy Winter nights
- Building approval in place for 6-bed modern masterpiece
- Owners happy to include plans and approval with sale
- DA approval for 20m x 12m shed (shed pad cut)
- Concrete hard stand accessible via solar gate
- Huge treehouse cubby plus climbing wall and slide
- 5 mins to Samford Village | 5 mins to Ferny Grove Rail

** Virtual furniture has been utilised throughout this marketing campaign

Disclaimer: Whilst every effort has been made to ensure the accuracy of these particulars, no warranty is given by the vendor or the agent as to their accuracy. Interested parties should not rely on these particulars as representations of fact but must instead satisfy themselves by inspection or otherwise.