

# 37 Lumeah Avenue, Elanora Heights, NSW 2101



## Sold House

Thursday, 18 April 2024

37 Lumeah Avenue, Elanora Heights, NSW 2101

Bedrooms: 4

Bathrooms: 2

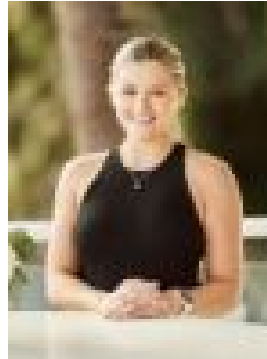
Parkings: 2

Area: 835 m2

Type: House



Garry Greco  
0452269821



Lulu Hyett  
0299773300

## Contact agent

Completely secluded within an exquisitely landscaped garden oasis, this sumptuous residence has been meticulously transformed to create a luxurious resort-like family entertainer in a whisper-quiet locale. With a choice of extensive living spaces radiating around a sleek stone kitchen and superb appointments evoking an ambience of modern chic, it is embraced by alfresco entertaining areas and level lawn at the front and rear. Placed on 835sqm of fully enclosed and private landscaped gardens with a sparkling heated pool, it is a short stroll to parks and playgrounds, walk to school and handy to village shops, Narrabeen Lagoon and beaches. \* Generous living space with a defined dining area and engineered oak flooring sits alongside the kitchen\* Stylish CaesarStone kitchen with ceramic cooktop, 900mm oven and dishwasher overlooks the family room to the pool\* Extensive lower level family room with games area and bathroom flows to an enormous sunny rear entertainers' deck \* Spacious bedrooms with built-ins and ceiling fans are privately tucked away and there's a separate home office \* Ultra-modern bathrooms with stone/timber vanities and heated towel rails, the laundry has an additional powder room \* Fully fenced level lawn areas screened by hedges, entertainers' courtyard plus a self-cleaning heated pool with swim jets\* Ducted air con, plantation shutters, 32 solar panels, garden shed, underhouse storage and 9,000L water tanks\* 100m to Woorarra Lookout and playground, short stroll to Elanora Heights Public School and bush/bike trails within 50m\* Minutes to Elanora Heights Village, Narrabeen Lagoon, Village and Beach as well as Warriewood Square shopping\* Electronic gated vehicular access to an automatic double lock-up garage and off-street parking area OutgoingsCouncil: \$2,007PA approxWater \$684PA approx