

37 Mannikin Way, Bohle Plains, Qld 4817



House For Rent

Thursday, 16 May 2024

37 Mannikin Way, Bohle Plains, Qld 4817

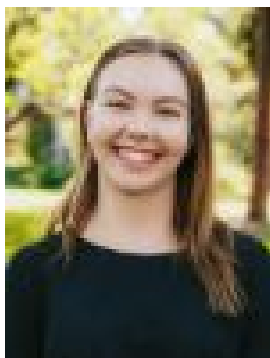
Bedrooms: 4

Bathrooms: 2

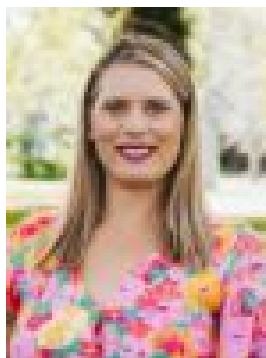
Parkings: 2

Area: 650 m2

Type: House



Jacquelyn Shimeld
0747504000



Vittoria Marques
0416019839

\$630 per week

Conveniently located in Bohle Plains this single level, light filled home is positioned on a sizeable 650sqm block within reach of some of Townsville's best amenities. Consisting of 4 bedrooms and an office the inside of the home possesses a natural flow with the master bedroom complete with ensuite and positioned separately to the additional three bedrooms. The massive open plan family living, dining, and kitchen area flow effortlessly out to the beautiful undercover patio and garden. The feature of the house is without doubt the stunning undercover patio overlooking the tranquil fully landscaped garden - this is definitely a haven for peaceful living. This wonderful property also includes a garden shed to store all the additional items. This property could be your next ideal family home;

Property Features

- Central sleek modern kitchen with stainless steel Blanco oven and gas cooktop, Bosch dishwasher and ample cupboard spaces
- Flexible floor plan with separate lounge room
- Generous family living area
- Dining area with open flow and garden views
- Spacious master bedroom located on the opposite side of the home for ultimate privacy with walk-in robe and completely renovated ensuite
- Three remaining bedrooms all good sized with built-in robes
- Additional study or fifth bedroom
- Modern main bathroom with floating vanity with separate and bath
- Front porch to enjoy your morning coffee
- Security screen, air-conditioning and fans throughout
- Freshly painted internally
- Landscaped and mature gardens with garden shed
- Double garage with internal access

Location

- Located only a short distance of reputable schools
- Close to Willows shopping centre
- Only 25 minutes drive from Townsville City

Pets considered on application Available 27 May 2024 Don't Delay, Inspect Today!

Please note - All parties should make and rely upon their own enquiries in order to determine the accuracy of the information supplied. Some file photographs in use may have been taken some time ago or modifications have been conducted at the property since the photography. Please rely on your own inspection and investigations to determine if this property is suitable for your requirements and the information provided is general in nature. Ray White Townsville bears no liability for any loss sustained due to inaccuracy or omission.