

37 Old Chittaway Road, Fountaindale, NSW 2258

Acreage For Sale

Friday, 3 May 2024

37 Old Chittaway Road, Fountaindale, NSW 2258

Bedrooms: 3

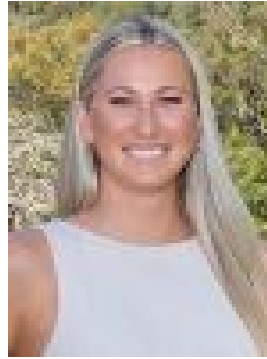
Bathrooms: 1

Parkings: 1

Type: Acreage



Peter Morris
0405155702



Krystal Bulmer
0413829452

Price on request

Escape to your own private sanctuary nestled within a picturesque suburb, where 12.6 acres of tranquillity awaits you. This expansive property offers endless opportunities for both relaxation and development, with the potential for additional dwellings or granny flats (STCA). Featuring a charming three bedroom home accompanied by two additional structures.- Three light filled bedrooms in the main house offering serene retreats- Enjoy warmth by the multiple fireplace and air conditioning- Gather in the spacious living area, with a picturesque view - Explore the expansive property featuring three large dams, one filled with koi fish- Discover the versatility of the three level plains adorned with various structures- Benefit from dual entry access, ideal for accommodating large vehicles with ease- Centrally located, enjoy convenient access to shops, schools, and transport hubs- Embrace outdoor living with an inviting entertaining, unwind in the outdoor spa - Blend of comfort, convenience, natural beauty, lifestyle of tranquillity and enjoyment- 2.6km to the M1 motorway and 40 minutes to WahroongaKEY DETAILS:Council Rates \$2936paWater Rates \$139pa