

**3704/301 King Street, Melbourne, Vic 3000**

**Tiga**

**Apartment For Rent**

Saturday, 13 April 2024

3704/301 King Street, Melbourne, Vic 3000

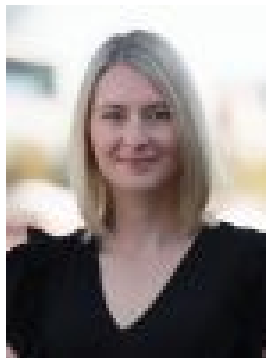
**Bedrooms: 1**

**Bathrooms: 1**

**Type: Apartment**



Jay Tee  
0468948380



Tania Galinec

**\$640 per week**

Aspire Melbourne: Elevated Urban Living Discover urban luxury at Aspire Melbourne, a 65-storey residential tower located at 301 King Street. Crafted by award-winning architects Elenberg Fraser, this sleek tower redefines urban living with its unique curvature and comprises of one, two and three-bedroom apartments. Residents enjoy exclusive access to: 15m swimming pool Gym Library Private dining area Cold plunge spa and steam room Private residents lounge for relaxation Positioned on King Street, Aspire Melbourne ensures convenience at your doorstep. The building is situated moments from Queen Vic Market and Flagstaff Gardens, and only a short walk to Flagstaff & Southern Cross Train stations. Key features of the apartment include: Open-plan living/dining area with split system Modern kitchen with quality appliances Built-in robes European style laundry space Secure video intercom entry and fob activated lifts Unfurnished Register your interest now for a private tour. Simply request for an inspection by providing your details (please note that registering is essential to receive updates on changes or cancellations). Photography & videos advertised may vary from the current property conditions, views and furniture (if applicable). Inspections are recommended

Aspire Melbourne: Elevated Urban Living Discover urban luxury at Aspire Melbourne, a 65-storey residential tower located at 301 King Street. Crafted by award-winning architects Elenberg Fraser, this sleek tower redefines urban living with its unique curvature and comprises of one, two and three-bedroom apartments. Residents enjoy exclusive access to: 15m swimming pool Gym Library Private dining area Cold plunge spa and steam room Private residents lounge for relaxation Positioned on King Street, Aspire Melbourne ensures convenience at your doorstep. The building is situated moments from Queen Vic Market and Flagstaff Gardens, and only a short walk to Flagstaff & Southern Cross Train stations. Key features of the apartment include: Open-plan living/dining area with split system Modern kitchen with quality appliances Built-in robes European style laundry space Secure video intercom entry and fob activated lifts Unfurnished Register your interest now for a private tour. Simply request for an inspection by providing your details (please note that registering is essential to receive updates on changes or cancellations). Photography & videos advertised may vary from the current property conditions, views and furniture (if applicable). Inspections are recommended