

375 Devils Pinch Road, Toora, Vic 3962



Sold Livestock

Tuesday, 7 May 2024

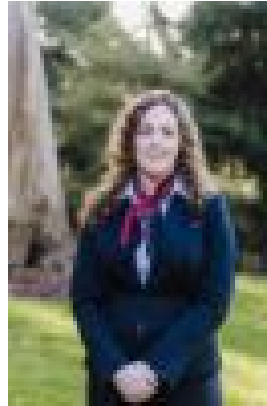
375 Devils Pinch Road, Toora, Vic 3962

Area: 62 m2

Type: Livestock



Don Olden
0417805312



Katrina Griggs
0428571083

Contact agent

155 Acres of quality grazing land ideal for cattle fattening/breeding, sheep, horses, dairy turnout or would make a beautiful lifestyle property. With the Agnes River running through the property and 58.6 megalitres of dam water license, this stunning farm is an ideal package of South Gippsland finest qualities. Drought proof, high performing and picturesque. Features include:

- Rolling undulating country (approximately 90% tractorable)
- Magnificent water supply - 13 dams includes 2 very large dams with a 58.6 megalitre total license for stock and irrigation - Agnes River running through the property - Reliable 40" annual rainfall
- Excellent fencing to 14 paddocks serviced by a central laneway
- Heavy duty stockyards
- 18m x 9m approx shed with lock-up bay and power connected
- Adco hut with toilet and office/kitchen facilities
- Excellent pasture and fertiliser history
- Toora 12km, Leongatha 45km, Melbourne 2½ hours

Kangaroo Flat is a unique opportunity to secure a drought proof quality grazing property in the renowned South Gippsland region. To arrange an inspection or for further information, please contact Don Olden on 0417 805 312 or Katrina Griggs on 0428 571 083. For a Due Diligence Checklist go to: consumer.vic.gov.au/duediligencechecklist