

# 38/1 Gatehouse Drive, Kensington, Vic 3031

## Apartment For Sale

Thursday, 13 June 2024

38/1 Gatehouse Drive, Kensington, Vic 3031

**Bedrooms: 2**

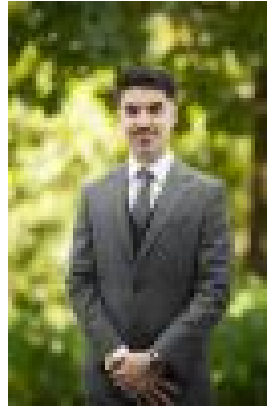
**Bathrooms: 1**

**Parkings: 1**

**Type: Apartment**



Mick Abdou



Khaled James  
0418103064

**\$410,000 - \$440,000**

Celebrating a spectacular position across from the incredible Flemington Race Course, take that exciting first step onto the property ladder or invest confidently with this contemporary two bedroom apartment. Featuring a substantial balcony for fun-filled alfresco occasions, the luminous open-plan living/dining is matched with a stylish kitchen fitted with stainless steel appliances. Merely metres from South Kensington train station, which is only two stops from the city, walk to other train stations, the tram, supermarkets and enticing eateries along Epsom Road and Racecourse Road. Freshly painted and with brand-new carpets, this brilliant home will appeal to those looking for a lifestyle of comfort and convenience, and for the savvy investors among us! - One onsite car space- Large, enclosed storage cage- Split system air-conditioners- Walk to primary schools and playgrounds- Close to Flemington Racecourse and Victoria University- Near the Royal Melbourne Hospital, Royal Children's Hospital and Footscray Hospital which will open in 2025- Easy access to Melbourne University and RMIT Enquire with one of our friendly agents today to book a private inspection!