

38/17-25 Yarra Street, Hawthorn, Vic 3122

THE AGENCY

Townhouse For Sale

Sunday, 26 May 2024

38/17-25 Yarra Street, Hawthorn, Vic 3122

Bedrooms: 3

Bathrooms: 2

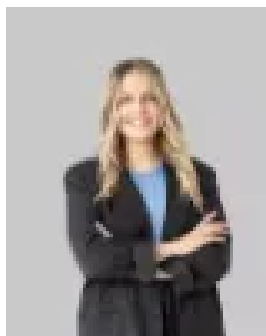
Parkings: 2

Area: 135 m2

Type: Townhouse



Luke Saville
0385780388



Jordan Cain
0385780388

\$1,100,000 - \$1,200,000

Discover this stylishly renovated 3-bedroom + study, 2.5-bathroom modern town residence, nestled in one of Hawthorn's most prestigious streets. Surrounded by stunning and grand homes, this property is perfect for those yearning for contemporary inner-city living. Beautifully appointed, this home is ideal for small families, young professionals, and downsizers who desire the sought-after Hawthorn lifestyle. The bright and generous lounge area offers scenic views of the front garden, creating a space to enjoy day and night. The well-sized dining and kitchen zone is a dream for home cooks, featuring designer stone benchtops, soft-closing drawers, stainless steel Bosch/Smeg appliances including a 900mm oven, and a DeLonghi wine fridge. Upstairs, you'll find all three bedrooms. The light-filled and spacious master bedroom boasts built-in robe storage, a gorgeous ensuite with sleek floor-to-ceiling wall tiling and a rain shower, and a private balcony with views of the scenic tree-lined Yarra Street. The two additional bedrooms come with BIRs, and one enjoys its own balcony. The upstairs area also includes a striking modern main bathroom. Additional features of this property include a downstairs home office, a powder room, a separate laundry upstairs, hydronic heating throughout, reverse cycle cooling, ceiling fans, a secure alarm system, under-stairs storage, additional storage space, a front garden, and two undercover car spaces. Enjoy the picturesque expanses of St James Park at the end of the street, with trams providing easy access to the CBD. You're also moments away from Bridge Road restaurants and cafes, Glenferrie Road shopping and Lido Cinemas, local shops on Burwood Road, Grace Park, Yarra River parklands, Hawthorn West Primary School, Strathcona Girls' Baptist Grammar School, Melbourne Girls' College, Richmond High School, and Hawthorn Station.