

**38/44 Gardeners Road, Kingsford, NSW 2032**

PPD REAL ESTATE

**Apartment For Sale**

Thursday, 14 March 2024

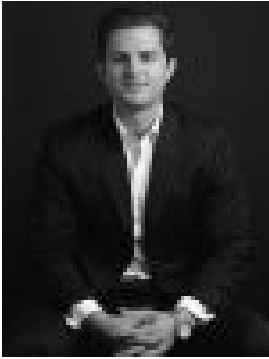
38/44 Gardeners Road, Kingsford, NSW 2032

**Bedrooms: 3**

**Bathrooms: 2**

**Parkings: 1**

**Type: Apartment**



Tristan Oddi  
0433110168



Brandon Shaw  
0412425800

## Under Contract

Live the high life in this newly renovated apartment in one of Kingsford's most tightly held buildings on the edge of Kingsford's dining scene and an easy 500m stroll to the light rail. A peaceful elevated corner setting on level 10 of the full-brick building affords panoramic district views out to Botany Bay with floor to ceiling windows in the master suite delivering the wow factor and framing alluring views that transform into a dazzling backdrop by night. Three bedroom apartments are hard to find and this house-sized residence features separate living and bedroom wings making it an ideal low-maintenance semi alternative with over 123sqm on title. Stylishly appointed interiors feature finishes in brushed brass and stone for a luxurious designer feel with a full-width terrace a perfect spot for entertaining or kicking back and enjoying a cocktail and spectacular sunsets. level lift access to secure undercover parking as well as access to a sunny rooftop pool with views to the city skyline. - ? Secure building with level lift access - ? Peaceful and private setting on level 10 - ? Newly renovated, hybrid timber floors - ? Panoramic views out to Botany Bay - ? Sub-penthouse level with only one common wall - ? 3 double bedrooms with built-in robes - ? Master suite with captivating views - ? New designer Calacatta quartz kitchen - ? High-end Smeg appliances, gas cooktop - ? Breakfast bar, brushed brass finishes - ? Glass-fronted living and dining space - ? Full-width terrace, covered dining area - ? 2 stylish bathrooms, main with a bath - ? Separate full-sized internal laundry - ? Brushed brass tapware and hardware - ? Ceiling fans and designer lighting - ? Secure parking, 123sqm approx on title - ? Sunny outdoor pool with city views - ? 600m walk to historic Kensington Park - ? Quick and easy access to the city - ? 1km to UNSW main campus and NIDA