

38/8 Crefden Street, Maidstone, Vic 3012

SILVERSERVICE

Apartment For Sale

Friday, 2 February 2024

38/8 Crefden Street, Maidstone, Vic 3012

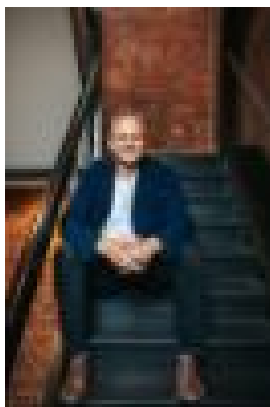
Bedrooms: 1

Bathrooms: 1

Parkings: 1

Area: 79 m2

Type: Apartment



Alister McDonald
0414866557



Mariam McDonald
0406386584

\$365,000 - \$395,000

Perhaps you are looking for your first home ... or even your next rental investment. In either case, you'll want to visit this one bedroom beauty with its verdant view. As you enter this 'penthouse' apartment and look past the spacious living area, all you can see is treetops. The open plan kitchen / living zone allows room for lounging, dining and more, and if you really want to hold a crowd, there's plenty more space on the large terrace. This architect-designed boutique residence has been recently repainted and refloored, after being occupied by the original owners. The apartment has been managed and maintained exceptionally, leaving nothing more for you to do than enjoy. Features include:

- generous access to natural light
- a well-spaced highly functional floorplan (total 79.4 square metres)
- fine quality fixtures & fittings
- sleek bathroom incorporating laundry facility (dryer included)
- modern kitchen boasting glass splashbacking, stone benches, ceramic cooktop and stainless steel fronted oven, dishwasher and refrigerator
- queen-sized bedroom with mirrored built-in robe
- heat/cooling
- oversized balcony (23.5 square metres) ideal for al fresco dining and entertaining, offering sweeping views
- security parking
- above bonnet storage

Situated just 8.5km from CBD Melbourne, amongst tranquil parklands, Unity at Willow Park is surrounded by amenities and services to cater for all. Victoria University is within easy reach. The Highpoint Shopping Centre, Flemington Racecourse, restaurants, supermarkets and the Western General Hospital are also in the local area. Buses leave from right outside Willow Park taking you in almost any direction you'd care to go. There are picturesque cycling, walking and running trails along the banks of the Maribyrnong River (only 500m away) and, the private Medway Golf Course, driving range and tennis centre is just five minutes' drive away in Ascot Vale. Take advantage of this truly exceptional opportunity before someone else does!