

38 Ashton Way, Baldivis, WA 6171



House For Rent

Wednesday, 8 May 2024

38 Ashton Way, Baldivis, WA 6171

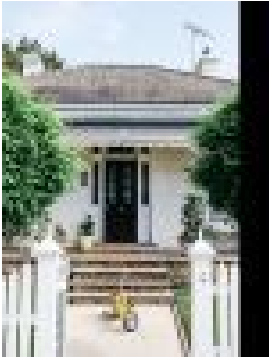
Bedrooms: 4

Bathrooms: 2

Parkings: 2

Area: 549 m2

Type: House



Leasing Corby
(08)95241882

\$700 per week

Raywhite are please to present the immaculately presented 4x2 home, located in the popular Highbury Park With a perfect size family space and rooms that are generously proportioned throughout. This is ideal for the growing family requiring comfortable living and space to enjoy. If you are looking to secure this beauty I would urge you to attend the first home open as predictions indicate this wonderful property will go fast. The multiple features and added specifications include;- Generous and spacious master ensuite with dual walk in robes, double vanities and modern fitments. Minor bedrooms are well sized and have built in robes. Impressively well appointed kitchen showcasing stone workbenches and feature tiling . Superb butlers pantry boasting an abundance of extra storage and workbenches. large quality appliances include 900mm stove top, oven and range hood. Large closed theatre room. Enclosed front yard with decking and attractive facade.. Large outside yard with small turfed area. Generous driveway leading up to a stunning portico entrance Applications are accepted and encouraged prior to viewing the property. The application form link will be sent to you as soon as you enquire about this property. PLEASE NOTE - if you do not register online, we cannot notify you of any upcoming inspections, time changes or cancellations to inspections. Please note we do not accept 1form applications.