

38 canyon circuit, Bonnie Brook, Vic 3335



House For Sale

Thursday, 9 November 2023

38 canyon circuit, Bonnie Brook, Vic 3335

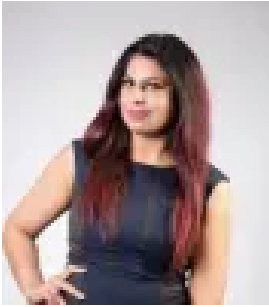
Bedrooms: 4

Bathrooms: 2

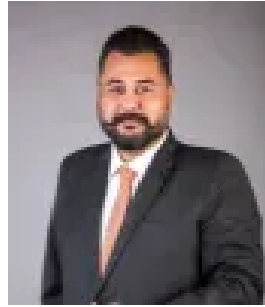
Parkings: 2

Area: 375 m2

Type: House



Smiley Sandhu
0387743209



Vikas Aneja
0387743209

\$650,000 to \$700,000

MELVIC REAL ESTATE N/W is excited to showcase another truly spectacular custom designed family floor plan, featuring a new standard of luxury inclusions! With Woodlea a thriving community located approximately 29 kilometres west of Melbourne CBD, this home is sure to capture the eye for a savvy investor or family looking for more space. This home is a showstopper from the moment you pull into the driveway, so let's explore:- Contemporary Façade featuring a modern style with Tiled pillars.- Kitchen features Breakfast Bar and fitted with 900mm appliances and thick stone benchtops- Butler's Pantry featuring additional storage options and large splashback window- Walk through to the Laundry, where the additional bench space and storage continues- Hybrid Flooring Throughout the house- Master Bedroom with Walk in Robe and luxurious Ensuite featuring floor to ceiling tiles, black fittings and fixtures, niche and a highlight window- 3 additional Bedrooms inclusive with built-in robes- Central Bathroom with Freestanding Bath, black fittings and fixtures, niche and floor to ceiling tiles- Solar hot water and low maintenance backyard- Garage installed with EVR charger for Smart cars Life is marketed as easy at Woodlea, with education facilities, local shopping centres, community centres and an abundance of local parks all within proximity. Remaining active and focusing on what's important is made easy with native woodlands, wetlands, parklands, adventure playgrounds and a dog park. For more information or to make an appointment to inspect the property please call Smiley sandhu 0425 642 583. Please see the below link for an up-to-date copy of the Due Diligence Checklist: <http://www.consumer.vic.gov.au/duediligencechecklist> **DISCLAIMER:** All stated dimensions are approximate only. Particulars given are for general information only and do not constitute any representation on the part of the vendor or agent.