

38 Delaware Road, Ermington, NSW 2115



Sold Duplex/Semi-detached

Thursday, 14 March 2024

38 Delaware Road, Ermington, NSW 2115

Bedrooms: 4

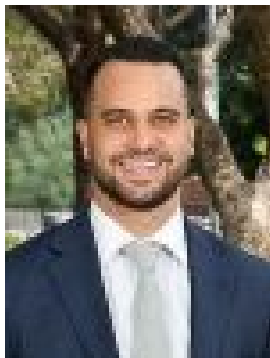
Bathrooms: 3

Parkings: 2

Area: 496 m2

Type:

Duplex/Semi-detached



Stephen Mina
0294077800



Emma Watson
0294077800

\$2,200,000

This architectural masterpiece is truly a statement in family-focused, prestige living. The home boasts generous proportions throughout & is positioned in arguably Ermington's best street. With your own access to Cowells lane reserve, nature is at your doorstep & you're completely immersed in tranquility & serenity. This is a home that cannot be missed.- Gourmet kitchen with stone breakfast bar, gas cooktop, dishwasher, and a huge butlers pantry- Lounge and dining enhanced by a vast open plan layout and with seamless outdoor integration- Inbuilt ceiling speakers in the living & outdoor alfresco- With your own private entrance onto Cowells Lane Reserve, this is the epitome of duplex living- Three living rooms throughout with ample storage- Outdoor alfresco complimented by a fully equipped outdoor kitchen with sink, BBQ, storage and opening out to an easy-care backyard- Four generously sized bedrooms, all with built in wardrobes.- Deluxe master bedroom with ensuite and over-sized walk-in robe- Modern bathrooms, main with double vanity and floor to ceiling tiles- Ground floor home office / guest bedroom with built in robe- Lock up garage with epoxy coated flooring, ample storage and internal access- Gas hot water system, 10kw solar system- Internal laundry with laundry chute, ducted air conditioning throughout, security intercom, balcony, high ceilings & ducted vacuum- Close proximity to schools, shops, cafe's, restaurants & the future light rail project