

38 Glory Way, Shepparton, Vic 3630



Residential Land For Sale

Friday, 14 June 2024

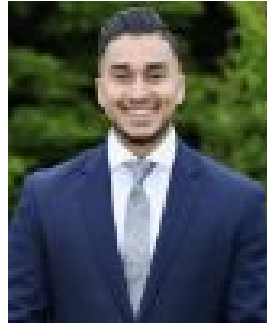
38 Glory Way, Shepparton, Vic 3630

Area: 553 m2

Type: Residential Land



Mack Mithewal
0484222227



Karandeep Singh

\$199,000 - \$219,000

Located within walking distance to GV Health, schools, parks, and shops, 38 Glory Way, Shepparton, offers a fantastic opportunity for investors, builders, or developers to capitalize on the growing accommodation needs of the hospital. With a total land area of 553m², the property is ideal for a 2-lot subdivision (STCA). It is free from easements and fully serviced, with public transport conveniently available at your doorstep. Property Dimensions: • Width: 15.3 m • Depth: 36.4 m For further details or to secure this outstanding opportunity to build your forever home, please contact the exclusively appointed agents at Ray White Land Sales Victoria: Mack Mithewal: 0484 222 227 Karandeep Singh: 0450 200 007 All interested parties are advised to conduct their own due diligence before making any submissions. DISCLAIMER: All stated dimensions are approximate. Information provided is for general purposes only and does not constitute any representation on the part of the vendor or agent.