

**38 Hawkesbury Esplanade, Sylvania Waters, NSW
2224**

McGrath

Sold House

Sunday, 13 August 2023

38 Hawkesbury Esplanade, Sylvania Waters, NSW 2224

Bedrooms: 4

Bathrooms: 2

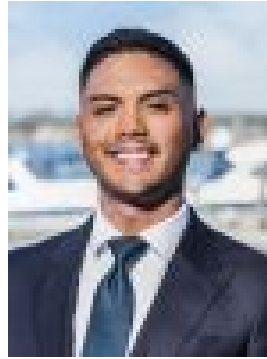
Parkings: 2

Area: 569 m2

Type: House



Trent Tarbey
0295293633



Josh Vela
0295293633

\$2,585,000

This sophisticated near new home offers minimal maintenance and modernity without compromise. Spanning across a single level to appeal to those looking for easy living without needing to sacrifice on space and size. Boasting fabulous indoor/outdoor entertaining areas with high end finishes throughout and complete privacy.- Rare wide frontage home exuding street appeal, luscious gardens - Marble stone feature fireplace, open plan living & dining - Chefs kitchen, 5 gas stove burner, walk in pantry & integrated fridge - Master suite with walk in robe, ensuite looking out onto pool - Main bathroom features double shower, gold tapware - Undercover alfresco area, inground salt water pool, Astro turfed yard- Security cameras, zoned ducted air conditioning, automated blinds- Large double garage with additional parking on driveway- Centrally located for easy access to local village shops and cafes - Minutes to Southgate Shopping Centre, Westfield Miranda and local schools