

**38 Hehr Street, Doreen, Vic 3754**

CHWYLA

**House For Sale**

Wednesday, 22 May 2024

38 Hehr Street, Doreen, Vic 3754

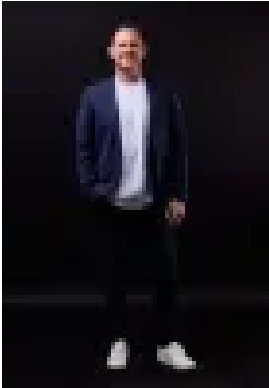
**Bedrooms: 4**

**Bathrooms: 2**

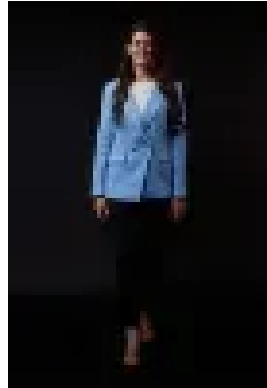
**Parkings: 2**

**Area: 646 m2**

**Type: House**



Paul Chwyla  
0386009995



Stacy Richards  
0386009995

**\$840,000 - \$890,000**

Make more of : 646m2 block 2 Approx. 31 square home 2 Four bedrooms 2 Two bathrooms with stone benchtops 2 Three living areas 2 Study 2 Double garage with epoxy flooring 2 Exposed aggregate driveway 2 Front porch 2 High ceilings 2 Bamboo flooring 2 Carpets with extra thick underlay 2 Fresh paint 2 Feature lighting 2 Downlights 2 Blinds 2 40mm stone kitchen benchtops 2 900mm appliances 2 Dishwasher 2 Walk-in pantry 2 Laundry with considerable built-in cabinetry 2 Two bedrooms with walk-in robes 2 Two bedrooms with built-in robes 2 Walk-in linen 2 Ducted heating 2 Evaporative cooling 2 Covered alfresco with ceiling fan 2 Extended pergola 2 Travertine pavers 2 Low maintenance landscaping 2 Veggie boxes 2 15 solar panels totalling 6.6kW 2 NBN 2 Garden shed 2 Pre-wiring for home theatre 2 Alarm 2 Security system 2 Carlisle home 2 Quiet street 2 160m to Patton Park Playground 2 260m to Ferlie Park 2 1.2km to Riverstone Estate 2 The initial appeal – Features like these: 17 statement metres of street frontage, high ceilings, fresh paint, carpet featuring an extra squishy underlay, 15 solar panels, a garden shed, travertine pavers and significant walk-in storage including two bedrooms with walk-in robes, a walk-in pantry and a walk-in linen press. The main attraction – A 646m2 block means that you'll not only have the luxury of a big, 31 square family home [we're talking four bedrooms, three living areas and a study], but also plenty of space to drop in a pool if you'd like, without sacrificing your backyard. Your journey here starts this Saturday.