

**38 Native Hut Drive, Teesdale, Vic 3328**



**Sold House**

Wednesday, 24 April 2024

38 Native Hut Drive, Teesdale, Vic 3328

**Bedrooms: 3**

**Bathrooms: 2**

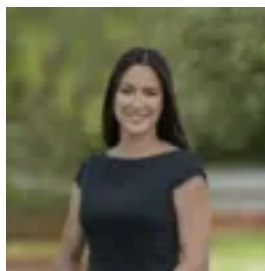
**Parkings: 6**

**Area: 1 m2**

**Type: House**



Jeff Begg  
0352227772



Kelly Dawson  
0352227772

## Contact agent

On Geelong's fringe, tucked away from the madding crowd, this property offers sublime serenity, privacy and tranquillity. Situated on the brink of a spectacular landscape and with subdivision potential, the property comprises of a 3 acre (approx.) lot and is close to the general store, Teesdale primary school and Don Wallace reserve. The cleverly designed residence caters for the growing family and is surround by extensive gardens and grounds and is an ideal escape from city life. An open plan kitchen, dining and family room, separate lounge/living room offer flexibility and functionality. Three generous bedrooms, the main with ensuite and walk in robe are an addition to a separate laundry – utility space. Internal highlights include polished timber floors, wood heating, ducted heating/cooling and ceiling fans. The kitchen features include a stone bench/breakfast bar and a suite of European appliances. Outdoors offers wonderful spaces for entertaining and relaxing with family and friends including a sunny decked area and an undercover alfresco domain ideal to enjoy the rural peacefulness. Additional features include lots of shedding, a large multi car lock up garage with roller door access, chook pen, veggie patch with raised garden/vegetable boxes and a privately positioned cottage ideal for the kids to play or a work from home option.