

38 Parson Street, Rye, Vic 3941



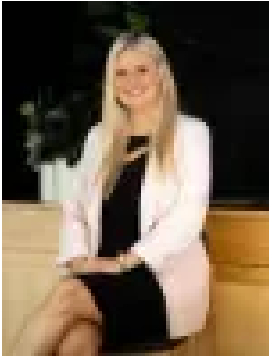
Residential Land For Sale

Saturday, 13 January 2024

38 Parson Street, Rye, Vic 3941

Area: 648 m2

Type: Residential Land



Jade Springer
0359852600

\$700,000 - \$750,000

An increasingly rare opportunity to secure a blue-chip parcel of land is now available just minutes to the Tyrone foreshore and Blairgowrie Village. Dotted with ancient Moonahs and offering a prime corner location as well as a large allotment size of approximately 648*m2 - the design options for your dream peninsula home (stca) are plentiful. Positioned just a short walk to the beach, from this sought after location you are also just minutes to Rye Village, plus a wide variety of local amenities and tourist attractions including cafes to indulge in on a Sunday morning, delicious restaurants, and both shopping and recreational facilities. Contact Jade today for more information or to arrange an onsite inspection. Property features:- Fantastic corner allotment of approximately 648*m2.- Private gate access and fully fenced.- Dotted with picturesque Moonah trees. - Mostly level allotment. - Incredible location - just a short walk to the stunning Tyrone Foreshore- Build your dream coastal home STCA. *All distances and measurements are approximate only.