

# 38 Tindales Road, Wollert, Vic 3750



## House For Sale

Friday, 10 May 2024

38 Tindales Road, Wollert, Vic 3750

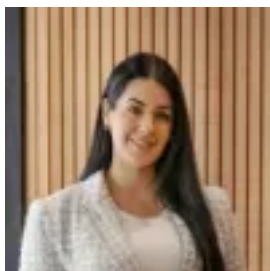
Bedrooms: 3

Bathrooms: 2

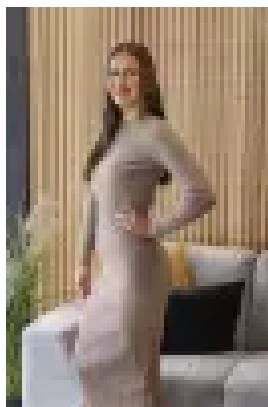
Parkings: 1

Area: 212 m2

Type: House



Ashlee Jade  
0397175372



Imogen Hammond  
0391111707

## **SBSD Tuesday, 4 June at 6pm**

Nestled in a brilliant location, just mere metres away from the tranquil Pine Park Wetlands, the vibrant energy of Epping Soccer Stadium, and the esteemed educational institutions of Wollert Primary and Secondary schools, Al Siraat College, and Glowrey Catholic Primary. Conveniently positioned, it offers easy access to everyday amenities such as Pacific Epping Shopping Centre, Aurora Village, Lyndarum Shops, and Epping Train Station, ensuring a lifestyle of convenience and connectivity. This beautifully presented home is perfect for all first home buyers, investors and retirees. Showcasing three bedrooms with the master bedroom featuring a walk-in robe to the ensuite and plantation shutters, fully equipped kitchen with quality appliances including 600mm stainless steel stove, stone bench tops, dishwasher, ample cabinetry including walk-in pantry, adjacent meals/family room. Venture outdoors to discover a superb deck area with luscious greenery and ceiling fans, ideal for entertaining all year round. Blessed with an abundance of extra features including the comforts of ducted heating and cooling via split system, striking timber flooring throughout with carpet to the bedrooms, ceiling fans to bedrooms, door bell, sizeable laundry with a separate courtyard, central bathroom with a shower-over-bath, oversized single garage with internal access plus much more. Inspection is a must!