

39/146-152 Pitt Street, Redfern, NSW 2016

BresicWhitney

Sold Apartment

Tuesday, 19 March 2024

39/146-152 Pitt Street, Redfern, NSW 2016

Bedrooms: 2

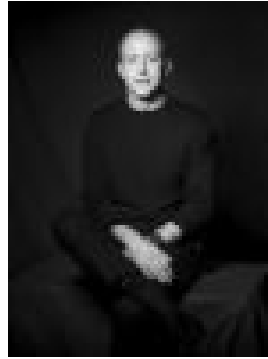
Bathrooms: 2

Parkings: 1

Type: Apartment



Melinda Antella
0402429462



Shannan Whitney
0411385444

\$1,186,000

A contemporary home in the 'Phillip Gardens' building, part of a boutique setting with courtyard ambiance, and a manicured green experience on the edge of the city. An indoor/outdoor home, seconds to vibrant dining spots and transport options. Highlights* SOLD off-market with BresicWhitney* Quality & landscaped security building* Bright aspects & peaceful outlooks* Well-kept interior, well presented t/out* Protected balcony, ideal for entertaining* Master w/ ensuite & in/outdoor flow* Full laundry plus large main bathroom* Walk-everywhere hub, secure parking* Further details available on request* Ask us about more off-market opportunities