

39 Bourke Lodge Drive, Currumbin Valley, Qld 4223 –

Coastal

House For Sale

Tuesday, 9 January 2024

39 Bourke Lodge Drive, Currumbin Valley, Qld 4223

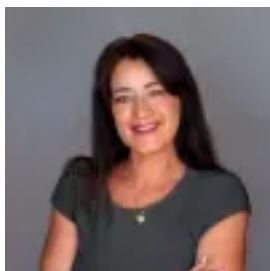
Bedrooms: 5

Bathrooms: 3

Parkings: 4

Area: 1 m2

Type: House



Renee Pannekoek

0755266999

Auction

Discover the perfect fusion of architectural brilliance and artistic flair in the enchanting Currumbin Valley. Nestled within a private 2.6-acre haven, this 403m² sanctuary beckons with a sleek and uniquely designed wave-effect roofline that adds a touch of drama and intrigue to your everyday life. Bathed in natural light, an exquisite kitchen takes center stage, complete with a cozy banquet-style dining nook and built-in seating. Adjacent to this, you'll find a vibrant lounge room, boasting natural limestone accents, VJ paneling, and soaring ceilings, leading you to an alfresco pavilion with a built-in BBQ. This is where you entertain with style, surrounded by breathtaking valley vistas stretching to Mt Cougal. For the ultimate relaxation, unwind in the outdoor spa, as your worries simply melt away. Children will revel in the excitement of their very own infinity-edge pool, set among the treetops, and a private skateboard half pipe. A total of five bedrooms await, each an oasis of light and comfort. The master bedroom offers a spa-worthy ensuite, ensuring you're always pampered. Two more bathrooms, including an ensuite for a second master suite, promise luxury, complete with deep soaking bathtubs, rain showers, and exquisite tapware. But that's not all. A separate dwelling mirrors the main house's contemporary ambience. It features a stylish kitchen, sunlit living and dining spaces, three bedrooms, and two bathrooms. One of these bathrooms offers a decadent taste of tranquility, inviting you to soak in a Balinese deep soak bathtub while you take in the lush greenery outside. Located just a short drive from the beloved Currumbin Rock Pools and a mere 10 minutes from the golden sands of Currumbin Beach, this property offers easy access to schools, shops, the M1, and the Gold Coast Airport. All of this without compromising the peace and privacy of your pristine hinterland paradise.

Main House Features: Unique wave-effect roofline, a true work of architectural art. Flooded with natural light, showcasing subtle sophistication. Foyer with stunning glass panelling. Designer kitchen with high-end stainless steel appliances, oversized island, walk-in pantry, and pool views. Charming banquet-style dining nook with built-in seating. Lounge room with natural limestone wall, VJ paneling, ultra-high ceilings, and outdoor BBQ access. Master bedroom with statement ceiling, walk-in robe, and a spa-worthy ensuite with twin rain head shower and deep soak bath. Second master suite with an ensuite and outdoor access. Bedrooms 3 and 4 with built-in robes. Mezzanine-style bedroom 5 with cathedral ceiling. Luxurious main bathroom with deep soak bathtub, vanity, toilet, and rain head shower. Expansive outdoor deck with spa bath. Alfresco pavilion with built-in BBQ, cabinetry, and sink, surrounded by lush forestry. Infinity-edge pool with treetop views. Skateboard half pipe for endless fun. Gym with bi-fold doors opening to the outdoor deck and sauna. Double carport. Solar hot water system. Keyless entry, LED lighting, ceiling fans, air-conditioning.

Studio Features: LED lighting, timber flooring, and VJ paneling. Stylish kitchen with electric cooktop, dishwasher, and Bosch oven. Bright lounge room with a fireplace, opening to a fire pit alfresco area. Bedrooms 2 and 3 with built-in robes. Modern main bathroom with shower, toilet, and vanity. Balinese deep soak bathtub with bi-fold windows, overlooking lush forestry. Laundry with sink and storage. Air conditioning.

Property Features: A lush and leafy 2.6-acre estate. Separate building envelope/parking area. Wooden gazebo surrounded by bush with power. Two water tanks for irrigation. Balinese hut overlooking lush forestry.

Location: 6 minutes to St. Augustine's Primary School. 7 minutes to Tallebudgera State School. 10 minutes to Currumbin Beach. 12 minutes to Palm Beach. 15 minutes to Gold Coast Airport. 16 minutes to Burleigh Heads. 35 minutes to Surfers Paradise*approximately.

Rental Appraisal is \$3000 per week. With its proximity to the Valley Estate, the Masterpiece becomes the perfect haven for wedding guests AIR BNB potential. The property is being sold at Auction as is - unless sold prior. Auction is onsite 10th February at 4:00pm.

Disclaimer: This property is being sold by auction or without a price and therefore a price guide cannot be provided. The website may have filtered the property into a price bracket for website functionality purposes.