

**39 Briscola Crescent, Wollert, Vic 3750**



**Other For Sale**

Thursday, 13 June 2024

39 Briscola Crescent, Wollert, Vic 3750

**Bedrooms: 4**

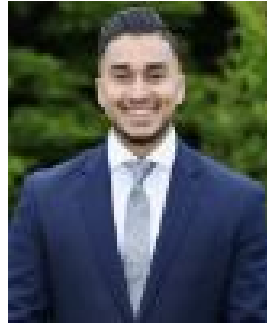
**Bathrooms: 2**

**Parkings: 2**

**Type: Other**



Raj Kaplish  
0424262853



Karandeep Singh

**\$820,000 - 860,000**

Discover a contemporary oasis of comfort and style in this exquisite 4-bedroom home, ideally situated in the prestigious Stonefield Estate. This corner block residence is bathed in natural light, exuding sophistication and functionality to ensure comfort and convenience at every turn. Located just moments from schools, parklands, and freeway access, this home is perfectly positioned for a modern family lifestyle. Upon entering the wide entryway, you are greeted by a spacious lounge, living, and dining area, thoughtfully delineated by a stunning stone waterfall kitchen. The unique corner lot provides additional space, enhancing the overall appeal of the property. The master bedroom features a walk-in robe and a luxurious ensuite, while the three additional bedrooms each come with built-in robes. The home is equipped with modern amenities, including evaporative cooling, ducted heating, solar hot water, and LED downlights. A walk-in pantry and a double garage add to the convenience and functionality of this remarkable residence. Positioned just moments from kindergarten and childcare facilities, Edgars Creek Primary School and Secondary College, town centre shops, eateries, and public transport, this home offers an unparalleled blend of luxury and practicality. For more detailed information or to arrange a viewing, please reach out to Ray White's dedicated agents: Raj Kaplish: 0424 262 853 Karandeep Singh: 0450 200 007

**DISCLAIMER:** All specified dimensions are approximate. The particulars provided are for general informational purposes only and do not represent any endorsement on behalf of the vendor or agent. For an updated version of the Due Diligence Checklist, please refer to: Due Diligence Checklist