

# 39 Headingley Rd, Mount Waverley, Vic 3149

## House For Rent

Thursday, 11 April 2024

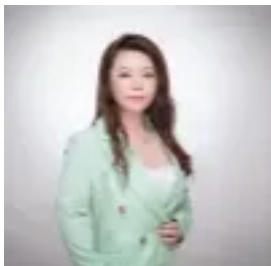
39 Headingley Rd, Mount Waverley, Vic 3149

**Bedrooms: 3**

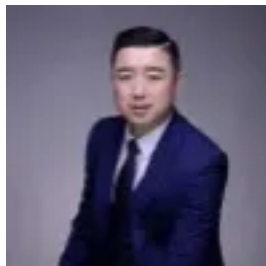
**Bathrooms: 2**

**Parkings: 2**

**Type: House**



Eva Geng  
0388033658



Michael Wu  
0388033658

**\$720 per week**

This can be your ideal family home for single level living in a coveted neighbourhood with walking distances to both Mount Waverley High School and Mount Waverley North Primary School. Completing with extra room and features including formal living that can be converted into a 4th bedroom, formal dining that can be a study, etc, it offers three generous sized bedrooms with full length built-in robes, master with ensuite and walk-in robes, updated main bathroom with separate toilet, open plan large family room adjacent to outdoor entertainment area with decking and built-in barbecue for gatherings, functional kitchen with large dining area enough for dining table. It's also close to Mount Waverley Village / Train Station, Avila College, Huntingtower School and walking distance to bus and tram stops. Other features consisting of:- Double garage with roller door at the rear plus ample off street parking space- Duct Heating and cooling - Solar power to reduce worrying electricity costs- Separate laundry- Security alarm - Australian native plants with low garden maintenance