

39 Heather Avenue, Rasmussen, Qld 4815

McDONOUGH
PROPERTY

House For Sale

Friday, 19 April 2024

39 Heather Avenue, Rasmussen, Qld 4815

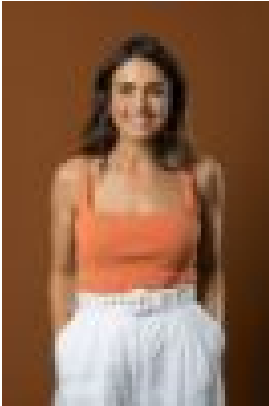
Bedrooms: 4

Bathrooms: 2

Parkings: 3

Area: 690 m2

Type: House



Monique Petersen
0450955736



Martin McDonough

Low - Mid \$600,000's

Presenting the epitome of modern living: a stunning masterpiece by GJ Gardner Homes, where luxury meets functionality, and every detail speaks of exquisite craftsmanship. With a location close to Ross River and only minutes from all amenities, Highland Gardens is a family-centric boutique estate. From the moment you step inside, you'll be captivated by the seamless blend of sophistication and comfort. The gourmet kitchen is a chef's delight, featuring top-of-the-line appliances, 90cm Westinghouse Pyrolytic Oven and 90cm Westinghouse Gas stove, water plumbing for fridge, sleek countertops, and ample storage for all your culinary essentials. Whether you're hosting a lavish dinner party or enjoying a casual breakfast, this kitchen is sure to inspire your inner epicurean. The open concept living and dining area beckons, offering the perfect space for entertaining guests or unwinding with loved ones. Retreat to the luxurious master suite, a sanctuary of relaxation adorned with plush carpeting, a walk-in closet, and a spa-like ensuite bath complete with a gorgeous, tiled walk in shower. The three additional bedrooms, all with built in wardrobes, each offer its own unique charm, providing comfort and privacy for family members or guests. The family bathroom exudes luxury with a spacious layout, elegant fixtures, and a choice between a deep bathtub and a large walk in shower, providing a sanctuary for rejuvenation and relaxation. With the addition of a separate theatre room and study, this impeccable residence offers a perfect balance of relaxation, entertainment, and productivity, catering to every aspect of modern living. Step outside to discover your own private oasis, where lush landscaping and a spacious patio invite you to bask in the beauty of nature or host al fresco gatherings on warm summer evenings. You'll find a spectacular 7x5m shed with 2x7m mezzanine, 10amp 240v power and an electric roller door providing ample storage room, it even has two sliding doors for easy access, built by Fair Dinkum Sheds Townsville. Next to this is a large space where you can park your boat or caravan up to 23ft, easily accessible via large sliding gate access to back yard. While a sandpit and shade sail offer endless fun for the little ones amidst the beauty of nature. Situated on a 690sqm block, with attention to detail at every turn and quality craftsmanship throughout, this home is not just a residence but a statement of your discerning taste and style. A 10-minute drive takes you to Willows Shopping Centre, Riverway, and the Ring Road, then onto Townsville Hospital and Lavarack Barracks. Don't miss your chance to make this extraordinary property your own. Features:

- Located close to Ross River and only minutes from all amenities, Highland Gardens is a family-centric boutique estate. A 10-minute drive takes you to Willows Shopping Centre, Riverway, and the Ring Road, then onto Townsville Hospital and Lavarack Barracks.
- A stunning masterpiece by GJ Gardner Homes, where luxury meets functionality, and every detail speaks of exquisite craftsmanship.
- The open concept living and dining area beckons, offering the perfect space for entertaining guests or unwinding with loved ones.
- The gourmet kitchen is a chef's delight, featuring top-of-the-line appliances, 90cm Westinghouse Pyrolytic Oven and 90cm Westinghouse Gas stove, water plumbing for fridge, sleek countertops, and ample storage for all your culinary essentials.
- Indulge in the ultimate entertainment experience with your very own private theatre room, designed for cinematic bliss right in the comfort of your home.
- Separate study/office, meticulously designed to enhance productivity and creativity.
- Luxurious master suite, a sanctuary of relaxation adorned with plush carpeting, a walk-in closet, and a spa-like ensuite bath complete with a gorgeous, tiled walk in shower.
- The three additional bedrooms, all with built in wardrobes, each offer its own unique charm, providing comfort and privacy for family members or guests.
- The family bathroom exudes luxury with a spacious layout, elegant fixtures, and a choice between a deep bathtub and a large walk in shower.
- 13.2kw system. 2 x 5kw Goodwe inverters, 36 x 370kw panels.
- 7x5m shed with 2x7m mezzanine, 10amp 240v power and an electric roller door providing ample storage room, it even has two sliding doors for easy access, built by Fair Dinkum Sheds Townsville.
- Large space where you can park your boat or caravan up to 23ft, easily accessible via large sliding gate access to back yard.
- Sandpit and shade sail offer endless fun for the little ones amidst the beauty of nature.
- Small garden shed on slab at the rear.
- Situated on a 690sqm block.