

39 Kiln Drive, Brompton, SA 5007



Sold House

Tuesday, 16 January 2024

39 Kiln Drive, Brompton, SA 5007

Bedrooms: 3

Bathrooms: 2

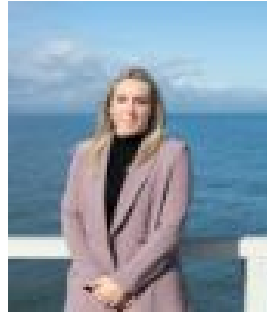
Parkings: 2

Area: 279 m2

Type: House



Mark Bowden
0408441126



Tyra Hennessey
0408077666

\$980,000

Nestled on a commanding corner allotment, this architecturally designed Torrens titled residence stands as a testament to contemporary elegance and innovative design. The residence is a symphony of sophistication, featuring soaring 3-meter ceilings that imbue the interiors with an airy grandeur. Abundant use of glass seamlessly merges the indoor and outdoor spaces, inviting natural light to dance across the sleek surfaces and creating a sense of openness. Every corner of this residence reflects the meticulous craftsmanship and thoughtful design, showcasing a clever layout that maximises both functionality and aesthetic appeal. The lower level welcomes you with a contemporary kitchen adorned with high-quality appliances, seamlessly flowing into the open-plan dining and family area, creating a perfect hub for gatherings and everyday living. The master suite is also positioned on the ground floor and is a haven of luxury, boasting a spacious layout and floor-to-ceiling built-in wardrobes. The accompanying designer ensuite is a sanctuary in itself, complete with a lavish bath for indulgent relaxation. Convenience is key with a separate laundry, an additional WC, and a double garage with internal access completing the lower level. Ascend to the upper level and discover two generously proportioned bedrooms, each adorned with built-in wardrobes to effortlessly combine style and functionality. Additionally, a separate study/sitting room awaits, offering a versatile space that can easily transform into a fourth bedroom to accommodate evolving needs. Whether it's a dedicated workspace or an extra sleeping area, the flexibility of this intelligently designed layout caters to the dynamic demands of modern living. Embrace effortless living on this low-maintenance allotment, allowing you more time to relax and appreciate the comforts of your home. The outdoor oasis is a haven of serenity, offering a private retreat where the soothing rustle of leaves and the dappling of sunlight create a peaceful escape. The carefully paved patio provides a foundation for relaxation, while the presence of mature trees adds a layer of natural beauty and seclusion. Nestled in the vibrant city fringe location of Brompton, this residence offers the perfect blend of urban living and community charm. Positioned in close proximity to the trendy Plant 4 precinct, residents can indulge in the eclectic mix of artisanal shops, gourmet eateries, and public transport right at their doorstep. This residence epitomises comfort and style, offering a harmonious blend of practicality and elegant design.