

39 Panmure Street, Rouse Hill, NSW 2155



Sold House

Friday, 1 September 2023

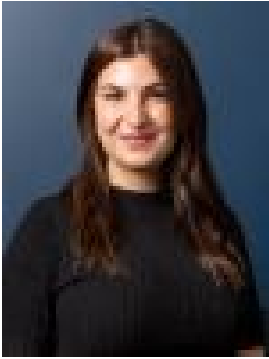
39 Panmure Street, Rouse Hill, NSW 2155

Bedrooms: 5

Bathrooms: 2

Parkings: 2

Type: House



Loren Khamu
0288829922

\$1,430,000

This spacious double story family residence is perfectly laid out, immaculately presented and beautifully updated throughout. The home has an abundance of natural light, space, entertaining potential and caters for the growing family. There are several exciting features including multiple living areas, double garage with drive through access as well as its ideal location set just metres from bus stops, local shopping and schools. - Living areas begin with spacious formal lounge and dining room at the front of the home, followed by the centrally located meals area and large separate rumpus room at the rear- The well appointed gourmet kitchen offers near new appliances with a gas cooktop and a dishwasher plus plenty of cupboard and bench space including a handy breakfast bar. - The accommodation consists of 5 good size bedrooms that are serviced by a family style bathroom with separate toilet, 3 of which have built ins and the master has its very own walk in robe and private ensuite. - The home also features ducted air conditioning, all gas appliances, fresh carpets upstairs, new lighting and blinds throughout plus a remote double garage with internal access and drive through function giving you space to park 5 cars off the street. - The low maintenance backyard comes complete with 2 large storage sheds and a concrete entertaining area with covering pergola. As mentioned, this ultra convenient has everything at your fingertips including Rouse Hill Public School, Rouse Hill Shopping Village, Fantastic restaurants and take aways, fantastic family parks and sporting fields, a number of medical facilities including a future hospital. Also within easy reach is Rouse Hill High School, Our Lady of the Angels and of course the Rouse Hill Town Centre with the North West Metro along side.