

**39 Thomas Street, Croydon South, Vic 3136**



**Sold House**

Wednesday, 25 October 2023

39 Thomas Street, Croydon South, Vic 3136

**Bedrooms: 3**

**Bathrooms: 1**

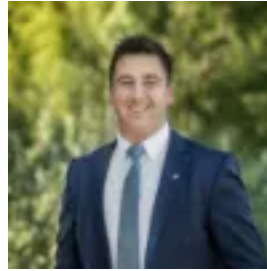
**Parkings: 5**

**Area: 864 m2**

**Type: House**



Ash Thompson  
0398706211



Alan Hodges  
0398706211

**\$818,000**

Positioned on an expansive 864sqm block with a wide 18.29m street frontage, this single level brick home presents an exciting array of potential options. With strong scope for extension and updates, the site also offers a superb opportunity for those looking to redevelop, or to build a brand new dream family home (STCA). Ideally situated just metres from Tarralla Creek Trail, and within walking distance of leafy Eastfield Park, buses, local Eastfield shopping and Tinternvale Primary School, the home is also set moments from Tintern Grammar, Melba Secondary College, Croydon shopping and restaurants, and both Croydon and Ringwood East Stations. Privately framed by lush established gardens, the home features a generous living room with wood-burning heater. A separate casual dining area is positioned alongside an airy kitchen with a gas cooktop, a dishwasher, and good storage space. At the rear, a sprawling family-friendly lawn is surrounded by low maintenance garden borders and raised veggie beds, with a spacious undercover area providing ample space for relaxed outdoor living. Three bedrooms include two equipped with built-in wardrobes, and are complemented by a skylit central bathroom with a separate bathtub, plus a laundry with direct outdoor access. The home also includes a three-car carport, plus an additional double lock-up garage and a substantial workshop.