

394 Reynolds Road, Research, Vic 3095



House For Sale

Wednesday, 22 November 2023

394 Reynolds Road, Research, Vic 3095

Bedrooms: 5

Bathrooms: 2

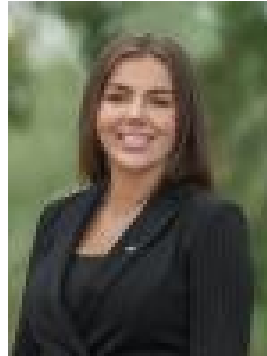
Parkings: 4

Area: 4038 m2

Type: House



Aaron Yeats
0400067024



Ashleigh Garch
0402660934

\$1,900,000 - \$2,090,000

Beyond an irresistible Victorian façade, 'Abingdon' is a stunning acreage home built to the exacting standards of B&G Cole builders, and delivering an exciting country lifestyle only minutes from Eltham and Research Central. A sweeping driveway and a full-length verandah welcome you inside to a formal lounge room warmed by an open fire, and a neighbouring dining room ideal for dinner parties or family celebrations. Make your way through to a vast open plan family room and meals zone; complemented by a separate rumpus room that gives children of all ages their own hang-out space. Designed for creative home chefs, the elegant kitchen is appointed with stainless-steel appliances, a walk-in pantry and a timber breakfast bar. For those studying or working remotely, a home office/5th Bedroom is tucked away at the front, alongside the secluded master bedroom with a bay window and garden outlook, a walk-in robe and a period-style ensuite with a clawfoot bathtub. In a separate wing, three additional robed bedrooms are well-serviced by a main family bathroom. The backyard is a place of peace and tranquillity, enhanced by a large alfresco zone with a calming water feature, and a leafy backyard featuring an adventure playground for the kids. Highlights include an alarm, ducted heating/vacuuming, refrigerated cooling, polished timber floors throughout, an external powder room and storage room, a large shed/workshop and a double auto garage with internal access. Positioned close to Eltham College and Little Scooters ELC, zoned for Research Primary School and Eltham High, with proximity to Eltham Village and Train Station, sports and recreational facilities.