

39B Mountain Ash Drive, Cooranbong, NSW 2265



Duplex/Semi-detached For Rent

Tuesday, 14 May 2024

39B Mountain Ash Drive, Cooranbong, NSW 2265

Bedrooms: 3

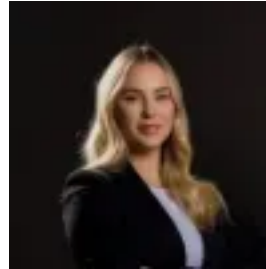
Bathrooms: 2

Parkings: 1

Type: Duplex/Semi-detached



Craig Malvern
0408257070



Chloe Oliver
0410470874

\$600/week

This modern 3 bedroom, 2 bathroom, single garage Duplex is located in the sought after suburb of Cooranbong. Featuring 3 large bedrooms with built in robes, ceiling fans and ensuite to main bedroom, this home is sure to please. The spacious kitchen is the centre piece of the home and features an island bench with stone bench tops, stainless steel appliances and a dishwasher. Boasting a single remote garage with internal entry, undercover entertaining area and large yard*Please register your interest for this property by applying through the APPLY button. •Stainless steel appliances•Split system air conditioning•Ceiling fans•Single remote garage•Undercover entertaining areaOnce your application is received we will be in contact to arrange a time to inspect the property.Disclaimer: We have been furnished with the above information; however, Linder Group gives no guarantees or undertakings concerning the accuracy, completeness or up-to-date nature of the information provided. All interested parties are responsible for their own independent enquiries in order to determine whether this information is in fact accurate