

**3A Charles Street, Ringwood East, Vic 3135**



**House For Sale**

Wednesday, 7 February 2024

**3A Charles Street, Ringwood East, Vic 3135**

**Bedrooms: 4**

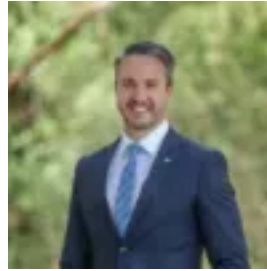
**Bathrooms: 2**

**Parkings: 3**

**Type: House**



William Lyall  
0398706211



Joseph Corsi  
0398706211

**\$1,300,000 - \$1,400,000**

Elevated above the street amidst meticulously landscaped tropical gardens and sweeping lawn, this impeccably presented brick home showcases renovated interiors across a thoughtfully zoned floorplan ideal for growing families. Positioned in a peaceful neighbourhood within walking distance of Ringwood East Station, buses, Mullum Mullum Creek Trail and Railway Avenue shopping, cafés and IGA, the home is also mere moments from Maroondah Hospital, Ringwood Lake Park, Eastland Shopping Centre and EastLink. Zoned for both Norwood Secondary College and Mullum Primary School, the location is within easy reach of Tintern Grammar, Aquinas College, Yarra Valley Grammar and Luther College. Visitors are greeted into a spacious living room, with full height windows overlooking the lush garden. An expansive separate casual family and dining area is flooded with natural light, flowing seamlessly out to an inviting paved terrace ideal for relaxed outdoor entertaining. The backyard features beautifully landscaped raised gardens, two water features, palm trees, a mature citrus tree, a family-friendly lawn, an undercover pergola, and a Japanese maple for vibrant seasonal colour. The modern kitchen boasts newly installed appliances including an electric oven and a 900mm gas cooktop with rangehood, and also comprises ample storage space and a dishwasher. Secluded on the upper level, a generous retreat living area provides a separately zoned space for harmonious multi-generational living. The impressively proportioned master bedroom includes a walk-in wardrobe and a bright private ensuite, while three additional light-filled bedrooms are each equipped with built-in wardrobes. The central family bathroom includes a separate bathtub and a separate W/C, and is complemented by a guest powder room on the ground floor. The floorplan also features an office set at the entry, ideal for those working from home. Freshly painted with newly laid plush carpeting, the home features gas ducted heating, evaporative cooling, ducted vacuuming, new roller blinds with privacy sheers, three brand new toilets, a security screen front door, an alarm system, a full laundry, and excellent inbuilt storage including a large under-stair space, the home also includes a lock-up garden shed and a three car lock-up garage with internal access.