

4/10 Timpson Court, Gray, NT 0830



Unit For Sale

Friday, 10 May 2024

4/10 Timpson Court, Gray, NT 0830

Bedrooms: 2

Bathrooms: 1

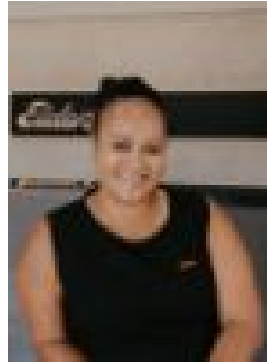
Parkings: 2

Area: 82 m2

Type: Unit



Rayna Kirikino
0400456484



Macca Houkamau
0417198527

OFFERS OVER \$240,000

This 2 bedroom, 1 bathroom solid hidden gem is tucked away in a quiet complex setting, centrally positioned, and is a great investment choice for the astute investor OR a perfect first home or downsizer. With dual parking at the front of the unit. Body Corporate fee is \$673.75 and the Sinking Fund contribution is \$46.20, Total \$719.95 p/q. As you walk in the entrance you have an open plan living, dining and kitchen area with timber look flooring that give it that homely touch. The kitchen offers wrap around counters with plenty of prep areas to work from and hard-wearing laminate counters plus overhead storage space as well as breakfast bar seating. There are sliding doors on the far side through to the courtyard and outdoor entertaining area. There are two bedrooms each with carpeted flooring underfoot and built in robes as well as air conditioning and large sliding windows that let in plenty of natural light and a soft breeze. The master bedroom is front facing. The bathroom hosts a shower and a corner vanity with built in storage space and there is a hallway linen closet. At the back of the unit there is a private entertaining area with a sheltered laundry room and verandah with a shade sail and a ring of small tropical gardens around the fence line that a green thumb can really bring to life with a splash of colour. In close proximity to public and private schools, Swell Palmerston swimming pool, Palmerston CBD, Gateway shopping centre and so much more.