

# 4/105 Ashenden Street, Shepparton, Vic 3630



## Unit For Rent

Tuesday, 21 November 2023

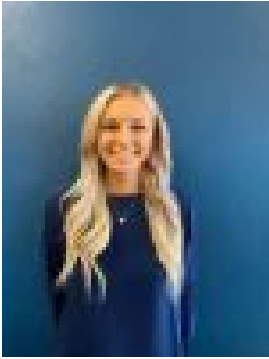
4/105 Ashenden Street, Shepparton, Vic 3630

**Bedrooms: 2**

**Bathrooms: 1**

**Parkings: 1**

**Type: Unit**



Paris Morgan  
58311800

**\$320 pw**

This freshly painted unit, has 2 bedrooms with both having built in robes & an open kitchen with single sink & free standing gas oven and stove top. The family area having a split system for heating & cooling and has NBN. In the bathroom there is a single shower & sink, the laundry has single trough & outdoor access to the secure low maintenance rear yard wonderfully located in a very appealing CBD position close to the Train Station, Woolworths, Coles & CBD. 6 or 12 month lease available. Not suitable for pets. \*\*\*\* Please send through an enquiry & we will email you an application form.