

4/15 Packard Street, Larrakeyah, NT 0820



Sold Townhouse

Sunday, 13 August 2023

4/15 Packard Street, Larrakeyah, NT 0820

Bedrooms: 3

Bathrooms: 2

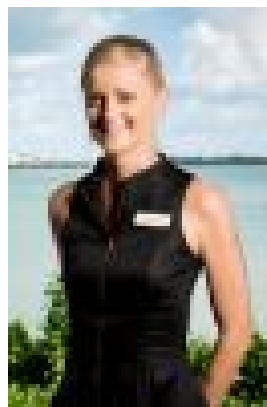
Parkings: 2

Area: 366 m2

Type: Townhouse



Korgan Hucent



Tiffany Carr
0408527068

\$650,000

*Entrance to townhouse is 4/18 Bambra Crescent*Thoughtfully set out and in a beautiful part of Darwin, this dual level home is perfect for the small family, professional couples, investors and many more. Sure to give a great return, this fantastic townhouse won't last long! • Superbly designed modern, 3-bedroom townhouse with loads of space to spread out over the 2 stunning levels • Bright and airy living room downstairs with a wall of louvred windows to catch the breeze, spills out onto 2 separate paved areas while upstairs a second living room forms a socialising hub between the bedrooms • Well appointed kitchen with bench space on all four sides as well as an integrated breakfast bar, gas cooktop and so much more • 3 beautiful bedrooms all with timber look flooring, the master has its own ensuite walk-in robe and private balcony • Huge bathroom features separate bath and walk-in shower • Downstairs features dual patios as well as lock up garage for 2 cars with an attached storage room • Amazing area with excellent schools, parkland and the water only a couple of blocks away Located in delightful Larrakeyah, this modern townhome combines the best of architectural planning to create a generously proportioned home in one of the best areas in Darwin all at an affordable price. Making the most of modern techniques, this home is perfectly suited to the tropics and is set up to make the most of cross-flow ventilation, light and shade to provide you with the most comfort possible. Multiple living areas, big bedrooms and 3 separate outdoor spaces will always ensure you have plenty of room to stretch out and enjoy yourself in this stunning home, while low maintenance gardens will allow you the time to do so. The big kitchen is perfect for entertaining and has enough space to make it a social hub as well as a work area. You'll love cooking with the ideal gas cooktop / electric oven combination making every meal a dream. Modern elegant design and amazing location come together here to create a home which is unique in all the right ways. Area Under Title: 366 square metres approximately Planning Scheme Zone: MD (Multiple Dwelling) Easements: Sewerage Easement to Power and Water Authority Darwin Council Rates: \$1620 per annum approximately Ace Body Corporate: \$1720 per quarter approximately Year Built: 2003 Rental Estimate: \$720 per week approximately