

4/16-18 Kingsland Road South, Bexley, NSW 2207



Apartment For Sale

Friday, 14 June 2024

4/16-18 Kingsland Road South, Bexley, NSW 2207

Bedrooms: 3

Bathrooms: 1

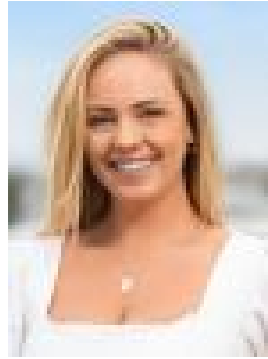
Parkings: 2

Area: 131 m2

Type: Apartment



Marc Warren
0295293633



Sarah Foetschl
0295293633

Guide \$700,000

In an ultra-convenient Bexley address, this wonderful apartment presents tasteful updates and modern comfort to ensure effortless urban living. It's a walk to village shops, cafés and eateries, while Bardwell Valley Parklands and Rockdale Plaza are nearby. Easy care modern lifestyle- Spacious open plan living and dining zones flowing outdoors- Two elevated balconies, one basks in wonderful north west sun- Newly renovated kitchen appointed with electric cooktop- Beautiful white attica Caesarstone benches and walk-in pantry- Three bedrooms with built-in robes, one opens to own balcony- Highlights include updated rain shower bathroom, guest w/c- High ceilings, new floorboards, separate private laundry- Tandem lock-up garage with new garage door and ample storage- Provides move in ready living with brand new updates- Perfect choice for investors, downsizers and first homebuyers