

4/165 Sydney St, New Farm, Qld 4005



Apartment For Sale

Sunday, 26 May 2024

4/165 Sydney St, New Farm, Qld 4005

Bedrooms: 2

Bathrooms: 2

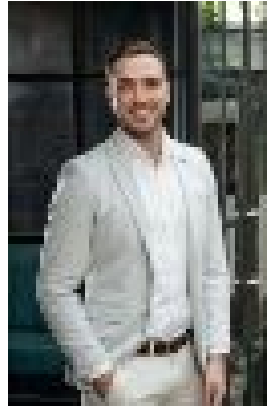
Parkings: 1

Area: 128 m2

Type: Apartment



Ben Lobie
0431567778



Daniel Anthon
0488079549

Upcoming Auction

Located just 200m from New Farm Park, this stunning two-bedroom apartment presents a unique layout boasting a balcony on both ends of the floor plan. Set along the treelined Sydney Street, in the tightly-held Boulevard Apartments, this is the first unit to market in the complex for over two years.

- Spacious balcony off the living area, second balcony off the bedrooms
- Established gardens and greenery provide tranquil backdrops and privacy
- Layout seamlessly connects kitchen, living and outdoor living with stylish neutral tones throughout
- Air conditioning, fans and layout encourages natural breezes throughout
- Large bedrooms, with built-in robes in both
- Two bathrooms, with en-suite in master bedroom
- Small complex of only 39 units in total
- Underground carpark with secure entrance
- Complex includes a site manager, pool, entertainment and BBQ facilities

Boulevard Apartments is a short, tree-lined stroll to New Farm's best restaurants, cafés, bars, New Farm Park and Brisbane Powerhouse - and the riverwalk.