

4/1A Shorland Place, Nowra, NSW 2541



Sold Unit

Saturday, 16 September 2023

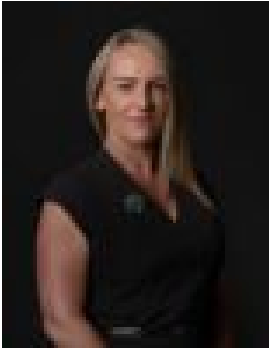
4/1A Shorland Place, Nowra, NSW 2541

Bedrooms: 2

Bathrooms: 1

Parkings: 1

Type: Unit



Sian Silk-King
0431578515

\$295,000

Unit 4, 1A Shorland Place is a fantastic opportunity to enter into today's current market. Located on the second floor, this unit is neat and tidy and would be ideal for a first-time investor, home buyer or simply add to your property portfolio. This two-bedroom unit offers you a functional layout with a large living and dining area, separate kitchen, balcony and private laundry. Property features:- Large main bedroom with floor to ceiling built-in robes- Additional bedroom with no built-in robe- Original yet neat and tidy kitchen, bathroom and laundry- Low-maintenance- One designated car parking spot within the complex. This two-bedroom unit is currently tenanted with a great tenant in occupancy.- Current rental - \$320.00 p/wk- Rates - \$321.00 p/q approx- Water - \$248.50 p/q approx- Strata - \$963.45 p/q approx. Located near the Lyrebird Sports Park and only a 5-minute drive to Nowra CBD, this two-bedroom unit is conveniently located. Don't let this little gem slip through your fingers. Call Sian Silk-King today and arrange an inspection. Disclaimer: All information contained herein is obtained from property owners or third-party sources which we believe are reliable. We have no reason to doubt its accuracy, however we cannot guarantee it. All interested person/s should rely on their own enquiries.