

**4/2 Edna Street, Thomastown, Vic 3074**



**Unit For Sale**

Friday, 26 January 2024

4/2 Edna Street, Thomastown, Vic 3074

**Bedrooms: 2**

**Bathrooms: 1**

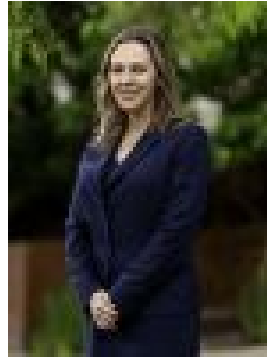
**Parkings: 1**

**Area: 141 m2**

**Type: Unit**



Gin Wu  
0394683000



Tania Romano  
0394683000

**\$440,000 - \$480,000**

This stylish unit provides ample opportunity for downsizers, investors and first home buyers !Comprising of two bedrooms, both with built-in robes and convenient access to a modern central bathroom. The open floor plan contains the kitchen with quality stainless steel appliances and gas cook top, overlooking a neat living/dining setting. Hard wood timber flooring flows through the home leading to a low maintenance private courtyard, creating the perfect scene to or entertain.Location is key in a highly sought-after pocket of Thomastown, you are within proximity of all major amenities, plus walking distance to High Street shopping, Thomastown station, bus stops, Thomastown primary and secondary schools, very easy access to the M80 freeway and only a short drive from Pacific Epping Plaza.Additional features include European laundry, heating and cooling, CCTV cameras, alarm system, private lock up garage with drive through access, plus an additional car space on title!Estimated rental return of