

4/21-23 Kelvinside Road, Noble Park, Vic 3174

buxton

Townhouse For Sale

Tuesday, 19 March 2024

4/21-23 Kelvinside Road, Noble Park, Vic 3174

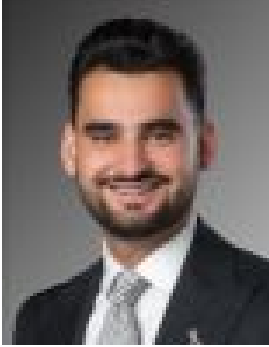
Bedrooms: 4

Bathrooms: 2

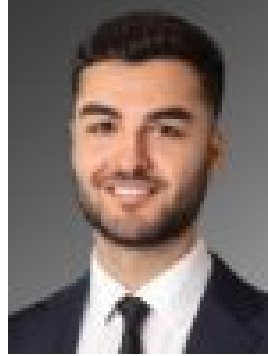
Parkings: 2

Area: 216 m2

Type: Townhouse



Ozan Kanbur
0403644379



Emrah Dilbaz
0422054302

\$670,000 - \$720,000

Modern Flair Meets Family Functionality With a well-considered layout, ideal for family entertaining, this contemporary four-bedroom, two-bathroom dual-level residence brings out the best in low-maintenance brilliance. The home's prime location and chic design will genuinely cater to today's families, making it an ideal place to call home. This secure street-facing home features a modern brick and rendered façade with a neatly fenced front yard. The interiors include an open plan living/dining zone, flushed with natural light and cleverly positioned around a chic kitchen with stainless steel appliances, tiled splashback and ample storage space - offering distinct areas for relaxing and dining with friends and family. Step outside to a private rear yard with low-maintenance spaces, where you'll love hosting outdoor gatherings in this peaceful suburban oasis that requires minimal upkeep. Experience further comfort in the spacious accommodation, thoughtfully designed, starting with a ground-floor bedroom with a walk-in robe. Ascend the stairs to find three additional bedrooms, all graced with built-in robes and serviced by a full bathroom. The master suite boasts a walk-in robe and ensuite with a soothing bath. Further appointments include a ground-floor powder room, full laundry with external access, ducted vacuum, intercom, solar panels, ducted heating, split-system cooling and a double remote garage with internal access. Perfect for families with children of all ages, with proximity to Harrisfield Primary School and Noble Park Secondary College. Families will find that just a short walk will bring them to fantastic parks, outdoor recreation, shops and restaurants to meet all their family needs. Daily commutes will be efficient with access to the Monash Freeway, Eastlink, public transportation via nearby local bus routes, and Noble Park Train Station.