

**4/273 Brighton Road, Somerton Park, SA 5044**

**GaryJSmith**

**Apartment For Rent**

Saturday, 27 April 2024

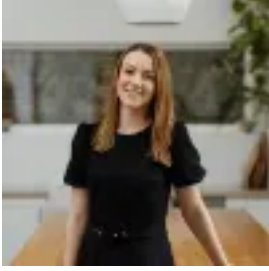
4/273 Brighton Road, Somerton Park, SA 5044

**Bedrooms: 2**

**Bathrooms: 1**

**Parkings: 2**

**Type: Apartment**



Laura Walker  
0417872543

## **\$410 per week**

Apartment located just a 10 minute walk to the beach and John Miller Reserve with playground and picnic area, close to Broadway at Glenelg South offering a selection of cafes and restaurants, bus stop almost at your front door, easily accessible to local schools including Sacred Heart, Warradale and Paringa Park Primary schools, and in the highly sought after Brighton High zone. - First floor location, in a group of only 8 - 2 bedrooms – main bedroom with built-in robe, cupboard in 2nd bedroom - Neat compact kitchen, electric cooking - Floating timber floors - Reverse cycle split air-conditioner - Bosch dishwasher included - Balcony - Off-street open parking at side of unit - Access through a locked foyer entry (that services only two units), giving extra privacy and security Sorry, pets not allowed 12 month lease water supply & shared use charges apply \*Note for viewing this property - PLEASE READ\* You must go to [www.tenantoptions.com.au](http://www.tenantoptions.com.au) and pre-apply. If you do not pre-apply you may not be contacted or advised of any upcoming viewing times - viewing is likely to be a closed inspection and preference will be given to those who apply first and qualify. Please supply as much information as possible in your application. If you have questions email is preferred.