

# 4/29 Santley Crescent, Kingswood, NSW 2747



## Sold Unit

Friday, 10 May 2024

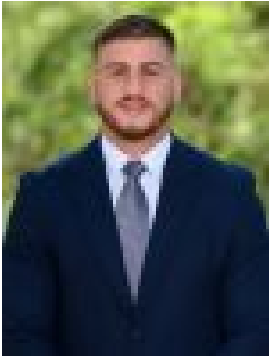
4/29 Santley Crescent, Kingswood, NSW 2747

**Bedrooms: 2**

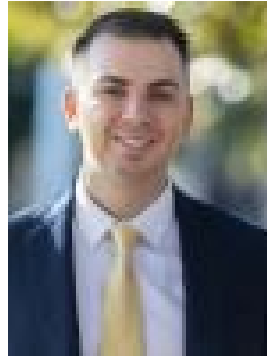
**Bathrooms: 1**

**Parkings: 1**

**Type: Unit**



Ray Jankovic  
0296234033



Peter Diamantidis  
0296234033

**\$400,000**

We are pleased to present 4/29 Santley Crescent, Kingswood, brought to you by Ray Jankovic from Ray White Diamantidis Group. This meticulously maintained 2-bedroom apartment is nestled in rear of a quite complex, offering an convenient and modern living experience. Situated strategically in the vibrant heart of Kingswood, it enjoys close proximity to essential amenities such as the train station, schools, and shops. Nearby landmarks including Western Sydney University, Nepean Hospital, and Penrith CBD enhance the appeal of this residence. With its immaculate presentation, this recently renovated apartment seamlessly blends comfort with convenience, making it an ideal choice for both first-time buyers and investors. Whether you're a first-time buyer or an investor, this property is a must-see!

**WHAT WE LOVE ABOUT THIS PROPERTY:**

- Two generously sized bedrooms featuring built-in robes
- Contemporary and stylish new flooring
- An impeccably updated kitchen, presenting modern aesthetics
- Secure single lock-up garage offering ample parking and storage solutions
- Tidy and well-maintained bathroom
- Sheltered balcony for outdoor relaxation
- Thoughtfully planned floor layout for optimal functionality
- Plantation shutters adorning every window
- Split system air conditioning units installed in both the living area and bedrooms.

**Central Location in Kingswood:**

- Several reputable schools nearby, including Kingswood High School, Penrith Selective, Montgrove College, Kingswood Public School, Penrith South Public School, and St. Joseph's Primary School.
- Western Sydney University's Penrith campus is within walking distance, ideal for students and academics.
- Explore nearby Caddens Corner and Westfield Penrith for a variety of high-end retailers, restaurants, and cafes.
- Nepean Hospital grounds are just approximately 1 km away or a 12-minute walk, catering to medical needs and convenient for hospital staff.
- Easy access to major freeways and public transport options.
- Kingswood train station is a short walk away, providing direct access to the Sydney CBD and other parts of Western Sydney.

For further information, please contact Ray Jankovic on 0438 535 945. Disclaimer: The above information has been gathered from sources that we believe are reliable. However, we cannot guarantee the accuracy of this information, and we do not accept responsibility for its accuracy. Any interested parties should rely on their own enquiries and judgment to determine the accuracy of this information for their own purposes. Images are for illustrative and design purposes only and do not represent the final product or finishes."