

4/290 New South Head Road, Double Bay, NSW 2028 **PPD REAL ESTATE**

Sold Apartment

Sunday, 13 August 2023

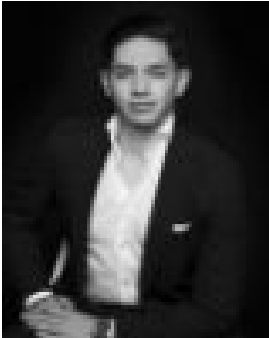
4/290 New South Head Road, Double Bay, NSW 2028

Bedrooms: 2

Bathrooms: 1

Parkings: 1

Type: Apartment



Nate Chacon
0283551143

\$1,275,000

Art Deco elegance meets cosmopolitan village living in this renovated apartment in the heart of Double Bay. One of only 15 in a secure 1930s block, the first-floor apartment is dressed in fresh contemporary tones with a well-conceived layout featuring two double bedrooms and new European windows for optimal comfort. Generous proportions, classic high ceilings and curved Art Deco lines are complemented by polished timber floors for a welcoming feel while its location offers superb walkability just footsteps to Bay Street's celebrated dining scene, cafe culture and weekly organic food market. Ready to move straight in or rent out and capitalise on high rental demand, this bayside classic comes with the huge bonus of a lock-up garage on separate title and is an easy 600m walk down to the picturesque foreshore and Double Bay Wharf. -?Top location in the heart of Double Bay-?Boutique security block with lift access-?2 double bedrooms with built-in robes-?Main with a built-in study, curved lines-?Open layout with a dedicated dining area-?Living anchored by a feature fireplace-?Caesarstone kitchen in Sleek Concrete-?Stainless steel appliances, gas cooktop-?Blum cabinetry, subway tile splashback-?Contemporary bathroom with laundry-?Deep bathtub and quality tapware-?Large lock-up garage on separate titles (via Brooklyn Lane)-?Convenient rear access to Bay Street -?Stroll to cafes, bars and cocktail lounges-?200m to Royal Oak, Margaret and Matteo-?550m to the beach and commuter ferry-?650m to Edgecliff station and retail hub-?250m to Kiaora Lane and Woolworths -?Easy access to the city and harbour life