

4/3-5 Goble Street, Laverton, Vic 3028



Townhouse For Sale

Thursday, 18 April 2024

4/3-5 Goble Street, Laverton, Vic 3028

Bedrooms: 3

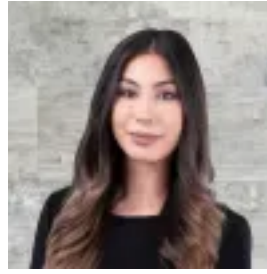
Bathrooms: 2

Parkings: 1

Type: Townhouse



Paul Caine
0399757080



Erica Aggett
0399757080

\$490,000 - \$520,000

LJ Hooker Property Point presents 4/3-5 Goble Street, Laverton. Experience the charm of this inviting three-bedroom townhouse, mere minutes from Laverton Station, nearby shops, parks, and schools. Discover a lifestyle of comfort and quality with spacious living areas, abundant natural light, and perfectly designed interiors. Whether you're a first-time buyer or an investor, this property is certain to impress with its convenient location and appealing features. -?Accommodation includes three spacious carpeted bedrooms all fitted with built-in robes, the main bedroom with an ensuite, providing comfortable accommodation for the whole family. -?A central modern bathroom and toilet ensure convenience and functionality. -?Enjoy optimal indoor climate control with refrigerated cooling and ducted heating throughout the home, while plush carpets in the bedrooms add a touch of luxury. -?Downstairs, a spacious formal lounge offers a cozy retreat for relaxation, while a separate meals and dining area create an ideal space for gatherings and family meals. -?The kitchen showcases stainless steel appliances, including a dishwasher, and is complemented by a stylish stone benchtop and ample storage. -?Further highlights include a single remote garage with its own driveway, timber floors, quality blinds, energy-efficient downlights, a rainwater tank, and ample storage space. Laverton residents enjoy a relaxed lifestyle, with nearby amenities including cafes, restaurants, banking facilities, health centers, and shopping centers. Laverton Creek Reserve and Frank Gibson Reserve offer playgrounds and parks, while the Laverton Swim and Fitness Centre is close by. Altona Beach is easily accessible, and Melbourne CBD is just a 30-minute drive or a short trip on public transport from Laverton or Aircraft train stations. . For students, nearby schools include Altona Meadows Primary School, Seabrook Primary School and zoned to Laverton P-12 College. Note. All stated dimensions are approximate only. Particulars given are for general information only and do not constitute any representation on the part of the vendor or agent. Any school zoning stated based on www.findmyschool.vic.gov.au as of 17/04/2024.