

4/30 Deschamps Street, Lilydale, Vic 3140



Unit For Sale

Tuesday, 23 April 2024

4/30 Deschamps Street, Lilydale, Vic 3140

Bedrooms: 3

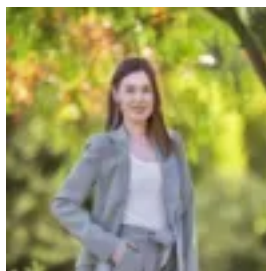
Bathrooms: 1

Parkings: 1

Type: Unit



Matthew Lockyer
0398706211



Erin McDougall
0398706211

\$630,000 - \$690,000

Peacefully secluded at the very rear of the block, this immaculate single level brick unit boasts a coveted north-facing rear, with a sundrenched private backyard and abundant natural light throughout. Showcasing quality contemporary renovations, the home presents an effortless lifestyle ideal for young families, first homebuyers, or for those looking to downsize without compromise. Situated just a short stroll from buses and Victoria Road Primary School, and within easy walking distance of Lilydale Station, the location is also set mere moments from Lillydale Lake walking trails, playgrounds and bushland. Lilydale Village shopping and cafés are close by, with the home close to Chirnside Park Shopping Centre, and the famed vineyards and restaurants of the Yarra Valley. Featuring an inviting open plan layout with elegant wide engineered timber flooring, the home greets guests into a light-filled living room with full height windows. An expansive separately zoned dining area flows out to an impressively spacious and secure outdoor area, with a lawn bordered by low maintenance established gardens ideal for pets or children's play. A gleaming contemporary kitchen comprises marble-effect laminate benchtops, sleek subway tiled splashbacks, a large gas cooktop, a stainless steel electric wall oven, a dishwasher, a breakfast bar, and ample soft-close cabinetry. Three carpeted bedrooms are each equipped with built-in wardrobes, including a substantial master with a split system and ceiling fan. The airy central bathroom features a shower over bathtub, and is complemented by a skylit separate W/C, and a full laundry with direct outdoor access. Featuring gas ducted heating, two split system air conditioning units, good inbuilt storage, security screen doors and external shade blinds, the home also includes a single lock-up garage with internal access, plus space for an additional car. Disclaimer: The information contained herein has been supplied to us and is to be used as a guide only. No information in this report is to be relied on for financial or legal purposes. Although every care has been taken in the preparation of the above information, we stress that particulars herein are for information only and do not constitute representation by the Owners or Agent.