

4/397-399 Liverpool Road, Strathfield, NSW 2135

Townhouse For Sale

Tuesday, 11 June 2024



4/397-399 Liverpool Road, Strathfield, NSW 2135

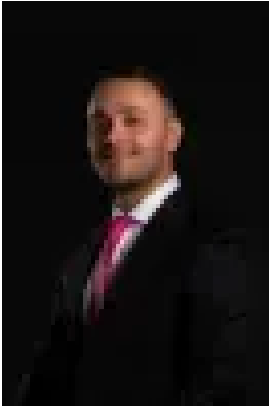
Bedrooms: 3

Bathrooms: 2

Parkings: 2

Area: 202 m2

Type: Townhouse



Elie Semrani
0297632277



Adrian Jian-Sheng Wu
0297632277

Auction

Strata Levy: \$750 p/q Approx Rental Return: \$1,000 p/w Approx Nestled away from the street in a tranquil setting at the rear of a small block of seven, this spacious and meticulously maintained full brick townhouse epitomizes modern elegance and convenience. Spanning two sunlit levels and encompassing a total area of 202sqm, this residence is designed for seamless indoor/outdoor entertaining and a laid-back lifestyle. Key Features Include:

- Three generously sized bedrooms with built-in wardrobes on the first floor
- Spacious open-plan living and dining area with high ceilings and polished timber floors
- Downlights, chic light fixtures, and split system air conditioning for comfort
- Well-appointed kitchen, internal laundry, and two bathrooms for practicality
- Remote double lock-up garage, security alarm system, and under stair storage for peace of mind
- Child-friendly low-maintenance front and rear courtyards with grassed areas and gardens

Perfect for young couples, astute investors, or downsizers seeking a blend of sophistication and functionality in their home. Conveniently located just moments away from Strathfield Town Centre, Strathfield South Public School, Henley Park, and with buses to the CBD and train station at your doorstep, this townhouse offers the ultimate in lifestyle convenience. Don't miss this opportunity to secure a private and secure residence in a sought-after locale, where modern living meets suburban tranquillity. Disclaimer: We have in preparing this document, used our best endeavours to ensure that all the information contained in this document is true and accurate, but accept no responsibility and disclaim all liability in respect of any errors, omissions, inaccuracies or misstatements contained in this document.