

4/42 Caroline Street, Annerley, Qld 4103



Unit For Sale

Wednesday, 10 April 2024

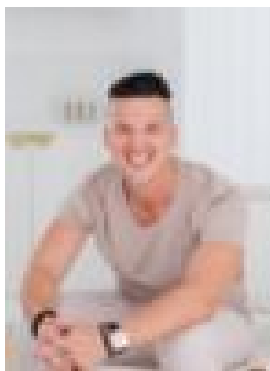
4/42 Caroline Street, Annerley, Qld 4103

Bedrooms: 2

Bathrooms: 1

Parkings: 2

Type: Unit



Geoff Sellars
0734268300



Brayden Sheehan
0421123055

For Sale

Positioned perfectly to capture the sweeping views from the city right around across Mt Cootha, this very generously proportioned, double brick unit offers the ideal opportunity to either secure your piece of the very popular Annerley market. Vacant and ready for someone to buy and move in, or a fantastic low maintenance investment opportunity, the home offers so much to astute buyers looking for space, location and convenience. Features include:

- Large open plan living area with air conditioning
- North facing balcony with views of CBD
- Two generous bedrooms, both with built in robes
- Master with air con and access to balcony
- Good sized bathroom with internal laundry
- Well appointed kitchen with dishwasher and plenty of cupboard space
- Timber floors throughout
- Freshly painted
- Large garage with potential for tandem car accommodation
- Additional storage room attached

Small complex of only 6

With the unit ideally located to make the most of what Annerley has to offer, you will find yourself within close proximity to:

- Upgraded Fairfield Train Station (part of the Cross River Rail)
- PA Hospital
- Fairfield Gardens Shopping Centre
- Woolworths Annerley
- Buses in and out of the CBD via Ipswich Road
- Multiple cafes and parks
- A short bus or bike ride across the Green Bridge to UQ
- Access north and south via M3 and Tunnel Network

An opportunity simply too good to miss, this one is an absolute must to inspect.