

4/48-50 Hertford Road, Sunshine, Vic 3020



Unit For Rent

Wednesday, 24 April 2024

4/48-50 Hertford Road, Sunshine, Vic 3020

Bedrooms: 2

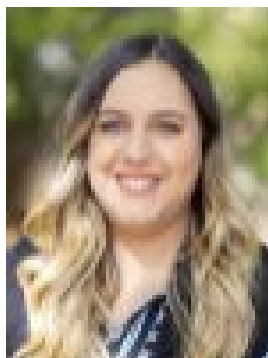
Bathrooms: 1

Parkings: 1

Type: Unit



Alice Mosut
0383268888



Demi Theoharou
0383268888

\$380

The charming 2 bedroom unit is nestled in a prime location offering convenience and comfort to your lifestyle. It has two generously sized bedrooms and one with a built- in wardrobe. A modern kitchen equipped with all the essentials including a dishwasher. A large living room with a balcony and small courtyard to soak up the sun.It also comes with one parking spot and off street parking. The unit is situated in the middle of Sunshine and is in walking distance to Sunshine Market Place & Sunshine Harvester Primary School.