

4/48A Noble Street, Noble Park, Vic 3174



Unit For Sale

Wednesday, 6 March 2024

4/48A Noble Street, Noble Park, Vic 3174

Bedrooms: 2

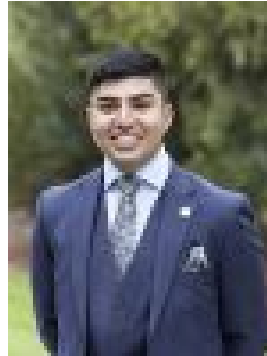
Bathrooms: 1

Parkings: 1

Type: Unit



Chris Utley
0395470000



Talha Mamsa
0432598151

Online Auction: \$300,000 - \$330,000

Online Auction Thursday 28th March 6.00pm. For bidding registration and link to view the auction contact Chris Utley on 0421 825 338. Step into a realm of refined living in this refreshed 2 bedroom villa. Perfectly positioned and with everyday convenience in mind, the single level classic offers spacious & low maintenance living without having to sacrifice outdoor space. As you enter, you're greeted by a spacious family living with modern comforts. Full of natural light throughout the villa provides internal living that beckons you to relax and unwind. The adjoining kitchen is equally spacious, featuring gas cooking facilities as well as ample bench & cupboard space. The two generously sized bedrooms each feature their own built-in wardrobes, providing ample storage for your wardrobe essentials and are well located nearby to the central family bathroom with shower, basin as well as separate toilet and laundry facilities. Outside, the tranquil rear courtyard is perfectly private & quiet, a great space for weekends of relaxation, gardening or for the kids & pets to run around and play! The wide driveway leads to a shared carport, providing secure off-street parking - enjoy the convenience of having your car just steps away from your front door! In addition to its impressive internal features, this unit's location is truly unbeatable. Situated in a highly accessible area, you'll find yourself within easy walking distance to Noble Park train station, shops, schools & cafes! Leave the car at home and easily access the best of what Melbourne has to offer! Don't miss the opportunity to elevate your lifestyle with this exceptional villa unit. Whether you're a first-time buyer, downsizer, or investor seeking a lucrative opportunity, this unit presents single level living with easy to maintain internals and generously sized outdoor courtyard & shared driveway space.