

4/58 Millswyn Avenue, Hampton Park, Vic 3976

Townhouse For Sale

Thursday, 13 June 2024



4/58 Millswyn Avenue, Hampton Park, Vic 3976

Bedrooms: 2

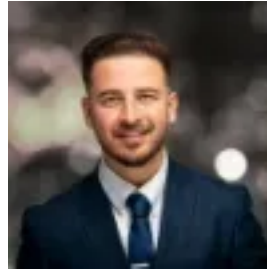
Bathrooms: 1

Parkings: 2

Type: Townhouse



Said Murad
0397032460



Elias Salimi
0397032460

\$560,000 - \$590,000

Welcome to one of the most prestigious new housing developments Hampton Park has to offer. Located just a stone's throw away from all amenities including Hampton Park Shopping Centre, Hallam Train Station, schools, and reserves, this is the perfect home for a growing family. This double-storey house offers a spacious living and dining area adjacent to the kitchen, which is equipped with stone benchtops and stainless-steel appliances, including a gas cooktop, rangehood, oven, and dishwasher. There is also a single lockup garage with access to the house through the laundry. Upstairs, you will find 2 spacious bedrooms, a study nook, and a central bathroom with a standing shower and bathtub. One of the bedrooms has a walk-in robe, while the second bedroom comes with a built-in robe. This is a great opportunity for first home buyers to secure a brand-new home in a fantastic location and benefit from stamp duty exemptions and the First Homeowner Grant. Investors will also find this property appealing, with a current market rental return for similar 2-bedroom properties of approximately \$500 per week or \$2,172 per calendar month. Construction is nearly complete and just a month away from completion. These houses will not be on the market for long, so don't miss out on this great opportunity! Quality Features Include:

- Timber floors throughout (except wet areas)
- Carpet in all bedrooms
- Stainless steel appliances including cooktop, oven, and dishwasher
- Stone benchtops
- Split system cooling/heating
- Remote control garage doors
- LED downlights
- Clothesline
- High ceilings
- Many more quality inclusions (list available upon request)

Don't miss your chance to own this beautiful home in the heart of Hampton Park!