

4/61 Clayton Crescent, Rutherford, NSW 2320



Sold Unit

Wednesday, 27 March 2024

4/61 Clayton Crescent, Rutherford, NSW 2320

Bedrooms: 3

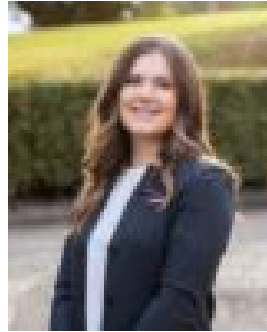
Bathrooms: 2

Parkings: 2

Type: Unit



Adam Carruthers
0249337855



Jaide Van Wyck
0429857622

\$510,000

Relish in a low-maintenance lifestyle with this contemporary home, which unveils an abundance of natural light and vibrant modern living in a convenient locale. Nestled in a quiet street at the back of the unit complex, this superior investment opportunity or ultimate downsizer combines premium quality and modern design with contemporary family living, all with the conveniences right at your doorstep. Step inside and discover the inviting open-plan layout connecting the living zones to the fully functional kitchen, equipped with brand-new appliances including a dishwasher, oven, and rangehood. Spoiled with space and proportions, there are three generously sized bedrooms, with the main bedroom providing a private sanctuary featuring a built-in robe and ensuite, while the remaining bedrooms feature built-ins and ceiling fans, offering comfort and convenience. Designed to offer a modern family sanctuary with vast space and quality inclusions, this residence has many additional features on offer:- Main bathroom featuring floor-to-ceiling tiles, a shower, and a bath.- Internal access to double garage with an automatic door.- Low-maintenance, fully fenced concrete courtyard.- Council rates per year: \$1630.- Strata fees per quarter: \$1200. Disclaimer: The information herein is collected from sources we trust to be dependable. However, we cannot guarantee its accuracy, so it is advisable for interested persons to rely on their own enquiries.