

**4/72-74 Daintree Drive, Albion Park, NSW 2527**



**Sold House**

Friday, 18 August 2023

4/72-74 Daintree Drive, Albion Park, NSW 2527

**Bedrooms: 3**

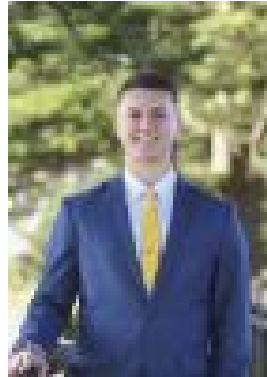
**Bathrooms: 1**

**Parkings: 1**

**Type: House**



Matthew Lay  
0448440609



Rodney Clarke  
0452273384

**\$625,000**

Single level living - perfect for the downsizer! If privacy and low maintenance is a priority in what your ideal property holds, your expectations will be exceeded with this detached brick and tile villa, situated in a small, well kept complex in the peaceful suburb of Mount Terry/Albion Park. This single level, east-facing property boasts three bedrooms, carpet throughout, an open plan kitchen, lounge and dining area, a single garage with a rear roller door and a low maintenance backyard. The property's offerings are further accentuated with high ceilings throughout and built-in wardrobes in all bedrooms. Being well maintained, this complex is sure to appeal on so many levels, from downsizing couples to retirees, investors to first home buyers, there is something for everyone. Quality "one-level" villas like this are rare to come by, as you will be extremely impressed by this property, we urge your immediate inspection. To register your interest in this property, please contact Matthew Lay on 0448 440 609 or Rodney Clarke on 0452 273 384. **DISCLAIMER:** Ray White Kiama has taken all care in preparing this information and uses its best endeavors to ensure that the information contained therein is true and accurate, however, accepts no responsibility in respect of any errors, inaccuracies or misstatements contained herein. Ray White Kiama urges all clients to make their own enquiries to verify the information contained herein.